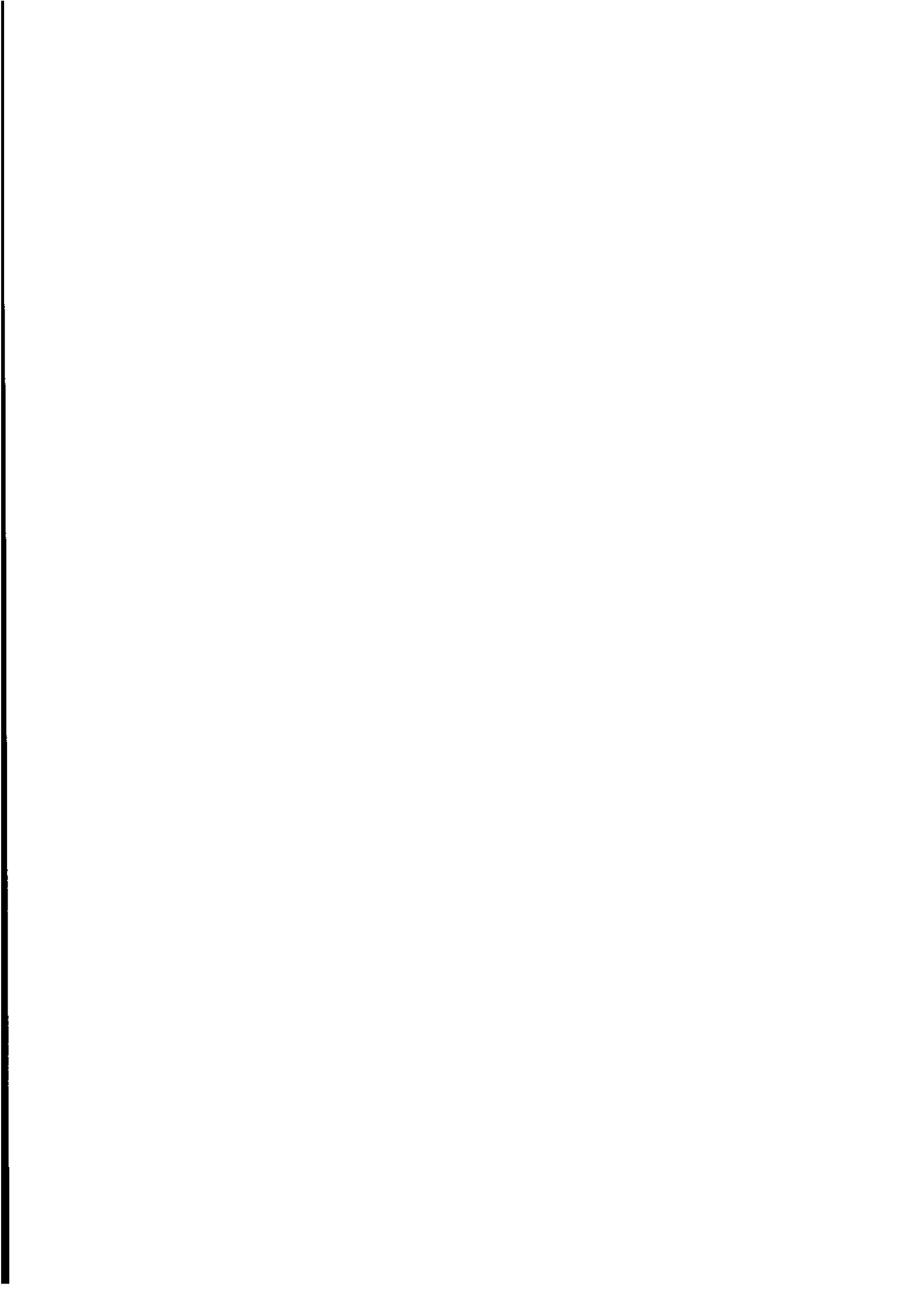




**September Quarter 1994
Employed Wage and
Salary Earners
Australia**

Catalogue No. 6248.0

A decorative horizontal bar at the bottom of the page, consisting of two thick, black, horizontal bars that taper at their ends, mirroring the design of the top logo. The bottom bar has a textured, stippled appearance in its central portion.



EMBARGOED UNTIL 11.30 A.M. 10 APRIL 1995

**EMPLOYED WAGE AND SALARY EARNERS
AUSTRALIA
SEPTEMBER QUARTER 1994**

**W. McLennan
Australian Statistician**

AUSTRALIAN BUREAU OF STATISTICS

CATALOGUE NO. 6248.0

© Commonwealth of Australia 1995

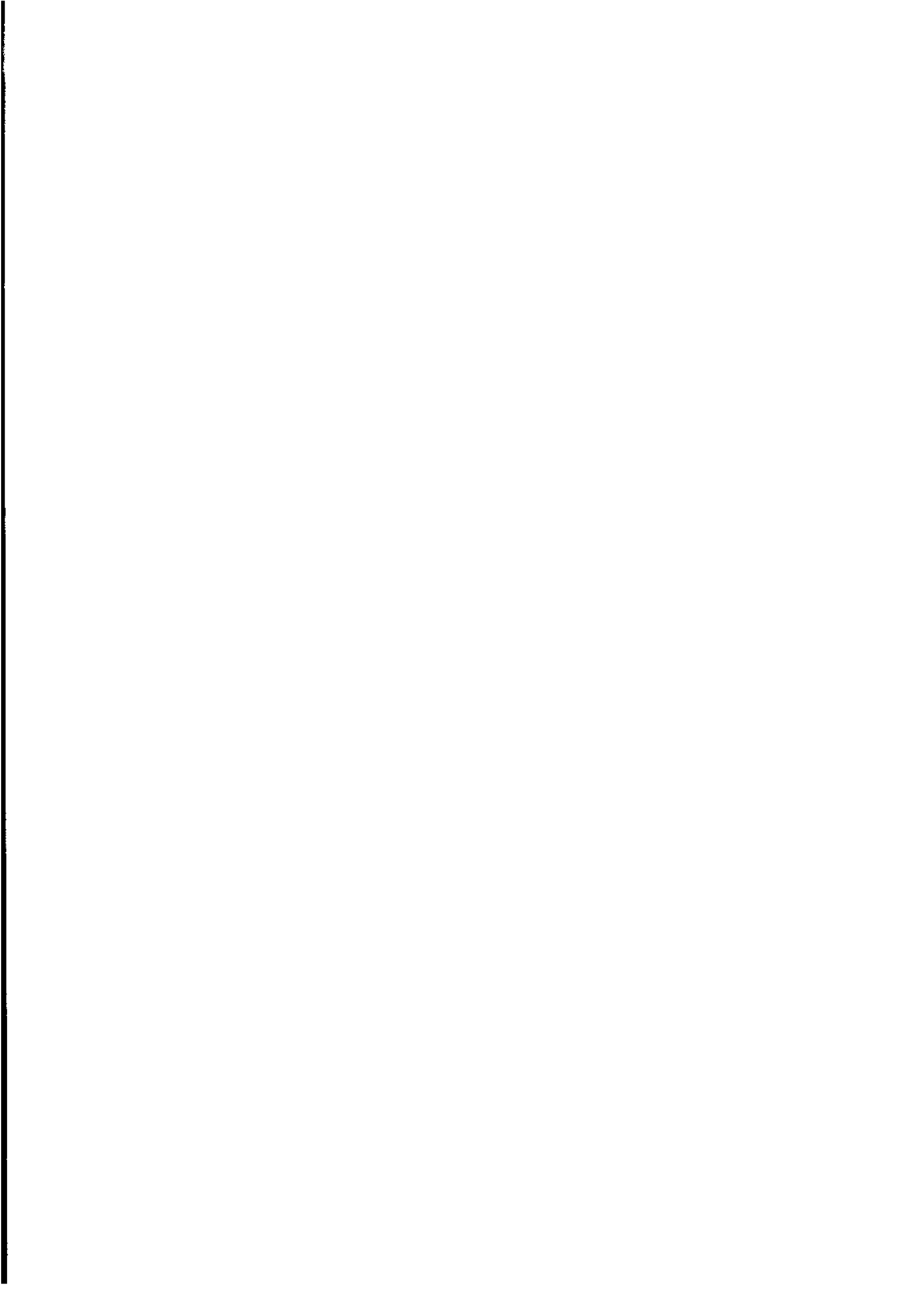
Produced by the Australian Government Publishing Service

CONTENTS

<i>Table</i>		<i>Page</i>
..	Summary of Findings	1
1	Employed wage and salary earners, States and Territories, persons — trend series	4
2	Employed wage and salary earners, States and Territories, persons — seasonally adjusted series	5
3	Employed wage and salary earners, States and Territories, persons — original	6
4	Gross Earnings, States and Territories, sectors — original	7
Employed wage and salary earners—		
5	States and Territories, sectors — trend series	8
6	States and Territories, sectors — seasonally adjusted series	9
7	States and Territories, sectors — original	10
8	States and Territories, public institutional sector — original	11
9	Australia, public institutional sector and industry, persons — original	12
10	Australia, public institutional sector and industry, gross earnings — original	12
11	Full-time and part-time, August 1994 — original	13
12	Australia, industry — trend series	14
13	Australia, industry — seasonally adjusted series	14
14	Australia, sector and industry — original	15
15	New South Wales, sector and industry — original	18
16	Victoria, sector and industry — original	19
17	Queensland, sector and industry — original	20
18	South Australia, sector and industry — original	21
19	Western Australia, sector and industry — original	22
20	Tasmania, sector and industry — original	23
21	Northern Territory, industry — original	24
22	Australian Capital Territory, industry — original	24
23	Private sector, employer unit size — original	25
..	Explanatory Notes	26
<i>Appendixes</i>		
1	Technical Note	29
2	Glossary	32

INQUIRIES

- for further information about statistics in this publication and the availability of related unpublished statistics, contact Sam Di Scerni on Perth (09) 360 5286 or any ABS State office.
 - for information about other ABS statistics and services please refer to the back page of this publication.
-



SUMMARY OF FINDINGS

NOTE: The estimates presented in this publication are obtained from the Survey of Employment and Earnings (SEE), a survey of employers conducted quarterly. The ABS publishes a number of independently obtained series of employment estimates, including those from the monthly Labour Force Survey (LFS). The difference between estimates of wage and salary earners in SEE and LFS has increased substantially over the past eighteen months. For further information on the comparability of the two surveys, see paragraphs 22 to 27 of the Explanatory Notes.

TREND ESTIMATES

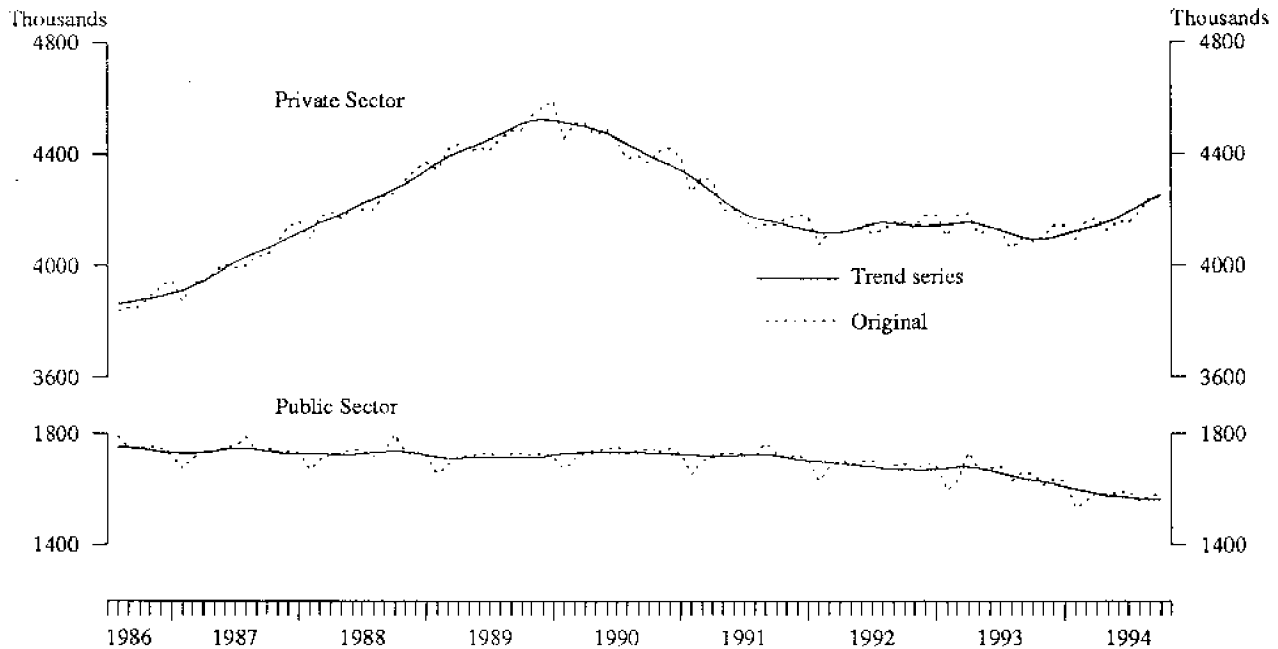
Private sector

In the private sector the number of employees grew steadily to a peak of 4,523,100 in November 1989 and then fell steadily to a trough of 4,115,400 in February 1992. Since February 1992 the number of employees fluctuated over a small range, falling to 4,093,200 in October 1993 before commencing a steady increase to 4,253,200 in September 1994. This represents an increase of 3.9% in this period. Over the same period five States also showed an increase (New South Wales 2.9%, Victoria 11.1%, South Australia 1.3%, Western Australia 1.7% and the Northern Territory 15.5%). The decreases in the other States were: Queensland 1.2%, Tasmania 6.3% and the Australian Capital Territory 1.5%.

Public sector

In the public sector the number of employees remained relatively steady over the five years to April 1990. It then fell steadily from 1,734,800 in April 1990 to 1,563,800 in September 1994, a decrease of 9.9%. Since September 1993 there has been a decrease of 67,800 (4.2%). For the same period the national percentage decrease was exceeded by Victoria (5.4%), South Australia (6.1%), Western Australia (5.0%) and Tasmania (6.4%).

DIAGRAM 1. EMPLOYED WAGE AND SALARY EARNERS, SECTORS AUSTRALIA



Source: See Tables 1 & 3

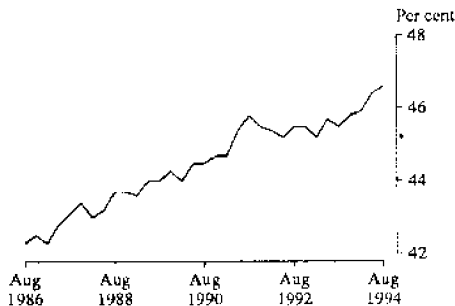
ORIGINAL ESTIMATES

Male and female wage and salary earners

Estimates of male and female wage and salary earners relate to the middle month of each quarter and are presented only in original terms rather than trend.

Diagram 2 shows the number of female wage and salary earners as a proportion of total wage and salary earners. Throughout the eight years from August 1986 to August 1994 this proportion has continued a steady rise from 42.3 per cent to 46.6 per cent.

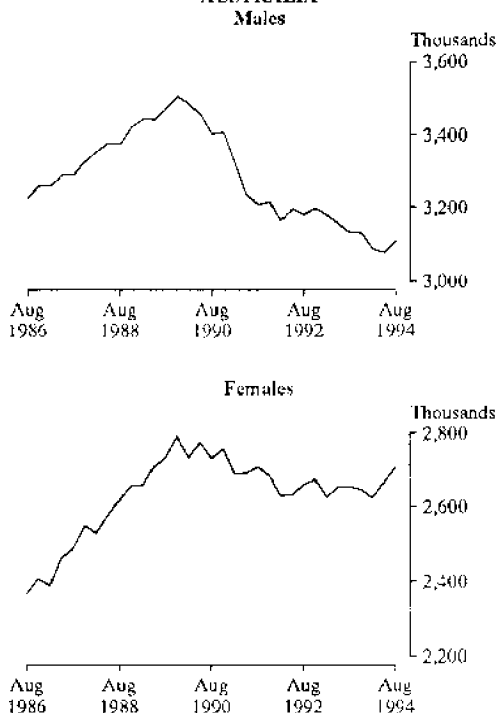
DIAGRAM 2. FEMALE WAGE AND SALARY EARNERS AS A PERCENTAGE OF TOTAL, AUSTRALIA



Source: See Table 7.

Diagram 3 shows the number of male and female employees in Australia over the last eight years. The number of male employees rose from 3,228,300 in August 1986 to a peak of 3,508,600 in November 1989 and then fell to 3,111,100 in August 1994. The number of female employees also rose from August 1986 (2,370,200) to a peak in November 1989 (2,793,200), and then fell to 2,618,900 in August 1993. In the twelve months to August 1994 the number of female employees rose again, by 90,600, to 2,709,500.

DIAGRAM 3. EMPLOYED WAGE AND SALARY EARNERS AUSTRALIA



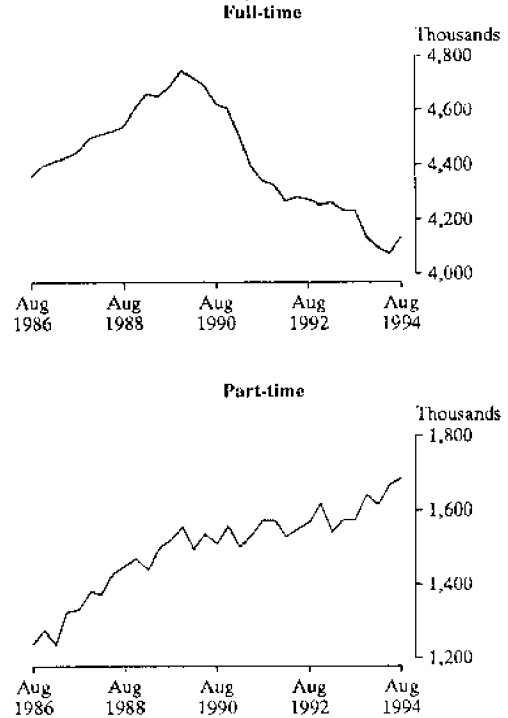
Source: See Table 7.

Full-time and part-time wage and salary earners

Estimates of full-time and part-time wage and salary earners also relate to the middle month of each quarter and are presented only in original terms.

Diagram 4 shows the number of full-time and part-time employees over the previous eight years.

DIAGRAM 4. EMPLOYED WAGE AND SALARY EARNERS PERSONS, AUSTRALIA



Source: See Table 11.

The number of full-time employees grew steadily over a number of years to a peak of 4,745,600 in November 1989 and has since fallen to a low of 4,075,400 in May 1994, rising again by 58,400 to 4,133,800 in August 1994.

The number of part-time employees also grew steadily over a number of years to 1,556,200 in November 1989. In contrast to full-time employees, the number of part-time employees continued to rise after November 1989, at a slower rate, to 1,686,800 in August 1994.

Employer unit size

Estimates presented in Table 23 show the distribution of employees in the private sector employer units over three size ranges.

Less than 20 employees:

As illustrated in Diagram 5, over the seven year period from August 1987 to August 1994 the number of employees in the private sector employed by organisations with less than 20 employees showed a rise from 1,327,000 to a temporary peak of 1,480,300 in August 1989. After a fall to a low of 1,378,600 in February 1991 the number of employees grew to 1,530,600 in November 1992 and has since fallen to 1,467,800 in August 1994. This represents a decrease of 4.1 per cent from the high of November 1992.

20 to 99 employees:

As illustrated in Diagram 5 the employment levels in the 20-99 range rose from 933,600 in August 1987 to a peak of 1,042,300 in November 1989 and has since fallen to 943,500 in August 1994.

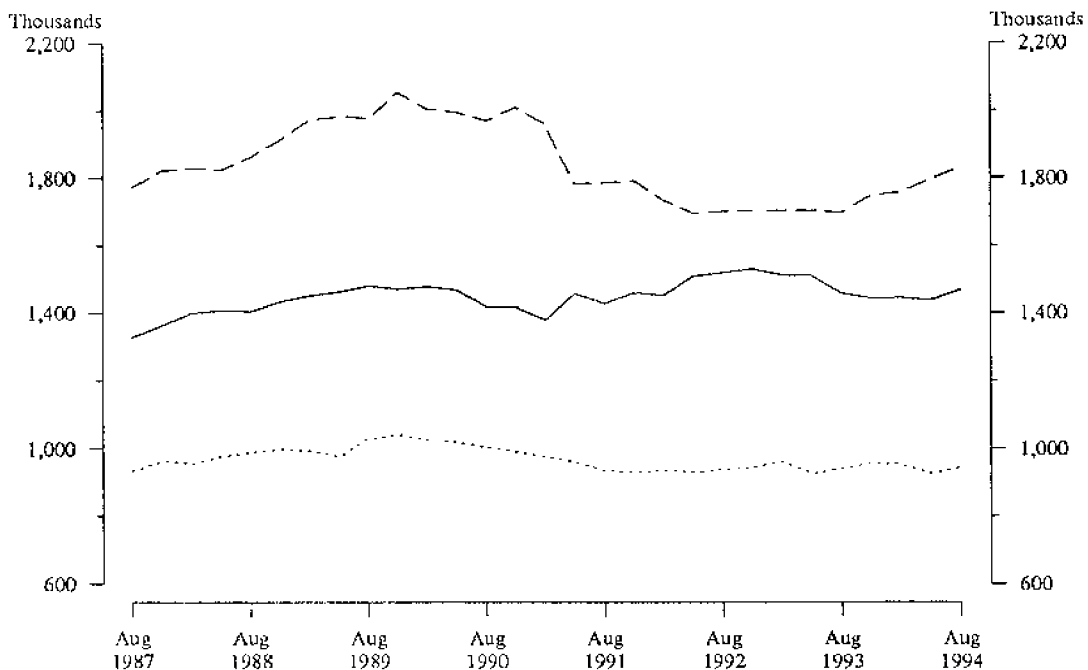
100 plus employees:

For the 100 plus employee category, Diagram 5 shows a peak of 2,056,400 in November 1989. The level of employment subsequently fell by 17.6 per cent to 1,694,900 in May 1992 and has since risen by 8.0% to 1,831,300 in August 1994.

Earnings

Total earnings for employed wage and salary earners in the September quarter 1994 in original terms was estimated as \$42,020.3m. This was a decrease of \$721.6m (1.7%) since the June quarter 1994 and an increase of \$1,071.8m (2.6%) since the September quarter 1993.

DIAGRAM 5. EMPLOYED WAGE AND SALARY EARNERS, AUSTRALIA
PRIVATE SECTOR, EMPLOYER SIZE



Source: See Table 23

———— 1-19 Employees
 20-99 Employees
 - - - - 100+ Employees

TABLE 1. EMPLOYED WAGE AND SALARY EARNERS, STATES AND TERRITORIES, PERSONS — TREND
(’000)

Month	NSW	Vic.	Qld	SA	WA	Tas.	NT	ACT	Aust.
PRIVATE									
1990-September	1,582.1	1,245.9	651.6	365.6	356.7	97.5	39.3	55.8	4,394.6
1991-September	1,468.2	1,140.5	631.4	361.6	356.9	99.0	40.1	55.0	4,152.7
1992-September	1,464.9	1,119.8	655.3	327.8	385.4	95.9	35.3	62.1	4,146.4
1993—									
August	1,432.3	1,079.0	659.3	331.5	401.0	104.2	33.5	59.6	4,100.3
September	1,437.4	1,067.9	661.9	332.8	397.7	103.0	32.9	59.8	4,093.3
October	1,442.6	1,059.4	667.7	334.4	394.8	101.5	32.8	60.1	4,093.2
November	1,447.1	1,054.6	675.5	336.3	393.1	99.9	33.2	60.2	4,099.8
December	1,451.7	1,053.8	683.3	338.2	392.2	98.2	33.9	59.9	4,111.2
1994—									
January(r)	1,456.2	1,056.3	689.5	339.4	391.0	96.6	34.7	59.1	4,122.9
February(r)	1,460.7	1,061.9	693.0	339.1	389.1	95.4	35.4	58.0	4,132.6
March(r)	1,465.4	1,072.2	693.2	337.2	386.9	94.9	35.9	56.8	4,142.6
April(r)	1,470.1	1,087.0	690.0	334.8	385.5	94.9	36.2	56.1	4,154.6
May(r)	1,474.7	1,104.6	684.5	333.1	385.9	95.1	36.4	56.1	4,170.4
June(r)	1,478.6	1,123.1	678.1	332.9	388.3	95.3	36.7	56.6	4,189.6
July	1,481.6	1,141.5	671.7	334.1	392.2	95.3	37.1	57.3	4,210.8
August	1,484.0	1,159.3	665.3	336.2	396.5	95.2	37.5	58.2	4,232.1
September	1,484.7	1,176.7	659.4	338.9	401.5	95.1	37.9	59.2	4,253.2
PUBLIC									
1990-September	558.4	450.5	265.2	152.9	161.7	50.4	22.3	71.8	1,732.7
1991-September	557.8	438.4	270.6	148.5	160.2	49.6	21.6	75.8	1,721.6
1992-September	528.5	428.8	272.0	144.0	159.5	47.7	20.1	71.6	1,671.4
1993—									
August	523.9	395.8	275.8	141.3	160.1	47.0	20.3	74.6	1,638.2
September	522.8	392.3	275.7	140.7	159.1	46.8	20.3	74.6	1,631.6
October	522.2	388.6	275.8	140.2	158.0	46.5	20.4	74.5	1,625.6
November	520.6	384.5	275.6	139.7	156.9	46.2	20.4	74.3	1,617.7
December	517.9	380.9	275.0	139.0	155.9	45.9	20.5	73.9	1,608.9
1994—									
January(r)	514.1	378.1	274.0	138.5	155.2	45.6	20.5	73.5	1,599.8
February(r)	509.8	376.2	272.8	138.0	154.6	45.2	20.6	73.3	1,590.9
March(r)	506.3	374.8	271.3	137.4	153.9	44.9	20.6	73.2	1,583.0
April(r)	504.0	373.7	269.9	136.8	153.2	44.6	20.6	73.2	1,576.6
May(r)	503.6	372.8	268.6	136.0	152.5	44.3	20.6	73.2	1,572.2
June(r)	504.7	372.2	267.5	135.0	152.0	44.1	20.6	73.1	1,569.5
July	506.1	371.7	266.6	134.0	151.6	44.0	20.5	72.9	1,567.1
August	507.4	371.3	265.8	133.0	151.3	43.9	20.5	72.7	1,565.3
September	508.5	371.2	265.2	132.1	151.2	43.8	20.5	72.5	1,563.8
PRIVATE AND PUBLIC									
1990-September	2,140.5	1,696.4	916.8	518.6	518.4	147.9	61.7	127.6	6,127.3
1991-September	2,026.0	1,578.8	902.0	510.1	517.1	148.6	61.6	130.8	5,874.3
1992-September	1,993.4	1,548.6	927.2	471.7	545.0	143.5	55.4	133.7	5,817.8
1993—									
August	1,956.1	1,474.8	935.1	472.8	561.1	151.2	53.8	134.2	5,738.5
September	1,960.1	1,460.2	937.6	473.6	556.7	149.7	53.2	134.4	5,724.9
October	1,964.8	1,448.0	943.5	474.7	552.8	148.0	53.2	134.6	5,718.9
November	1,967.6	1,439.0	951.1	476.0	550.0	146.1	53.6	134.5	5,717.5
December	1,969.6	1,434.7	958.2	477.3	548.1	144.1	54.4	133.8	5,720.1
1994—									
January(r)	1,970.3	1,434.5	963.6	477.8	546.2	142.2	55.3	132.6	5,722.7
February(r)	1,970.6	1,438.1	965.8	477.0	543.7	140.7	56.0	131.3	5,723.5
March(r)	1,971.7	1,447.0	964.5	474.7	540.8	139.8	56.5	130.0	5,725.6
April(r)	1,974.1	1,460.7	959.8	471.6	538.7	139.5	56.8	129.3	5,731.2
May(r)	1,978.3	1,477.4	953.1	469.1	538.4	139.5	57.0	129.3	5,742.6
June(r)	1,983.3	1,495.3	945.6	467.9	540.3	139.4	57.3	129.7	5,759.1
July	1,987.6	1,513.2	938.3	468.1	543.8	139.3	57.6	130.3	5,777.9
August	1,991.4	1,530.7	931.1	469.2	547.9	139.1	58.0	130.9	5,797.4
September	1,993.2	1,547.9	924.6	471.0	552.7	138.9	58.4	131.6	5,817.0

TABLE 2. EMPLOYED WAGE AND SALARY EARNERS, STATES AND TERRITORIES, PERSONS — SEASONALLY ADJUSTED ('000)

Month	NSW	Vic.	Qld	SA	WA	Tas.	NT	ACT	Aust.
PRIVATE									
1990-September	1,583.5	1,229.9	650.8	365.0	355.5	97.1	39.0	55.6	4,376.4
1991-September	1,471.5	1,138.0	633.6	363.7	355.1	99.0	40.5	54.2	4,155.6
1992-September	1,471.8	1,125.1	652.4	327.0	389.0	95.8	34.8	63.7	4,159.8
1993—									
August	1,434.9	1,078.6	658.2	334.8	400.9	103.4	33.2	58.8	4,102.9
September	1,432.0	1,070.6	654.6	331.1	402.5	103.7	33.0	60.4	4,087.9
October	1,440.2	1,059.6	669.7	333.5	389.2	101.3	32.4	59.3	4,085.3
November	1,448.8	1,055.2	675.0	337.8	391.4	100.7	32.8	60.8	4,102.4
December	1,455.6	1,049.2	683.0	329.0	390.5	100.1	33.2	61.5	4,102.1
1994—									
January(r)	1,463.6	1,058.8	690.7	346.4	390.5	93.5	35.8	58.1	4,137.3
February(r)	1,448.4	1,062.2	700.6	343.3	395.4	94.8	36.0	58.1	4,138.7
March(r)	1,467.5	1,066.1	693.3	341.2	396.0	95.8	36.2	58.2	4,154.4
April(r)	1,466.8	1,094.4	683.3	330.2	376.3	94.2	36.1	54.1	4,135.4
May(r)	1,480.3	1,100.9	685.8	329.2	379.9	95.6	35.9	55.5	4,163.1
June(r)	1,480.5	1,107.4	690.0	330.9	380.8	95.9	35.4	55.9	4,176.8
July	1,482.9	1,156.0	661.9	332.6	399.8	95.1	38.7	57.8	4,224.8
August	1,482.2	1,173.5	662.9	339.1	402.5	95.3	37.3	59.0	4,251.8
September	1,480.9	1,163.1	660.9	343.4	401.1	94.7	37.7	59.9	4,241.7
PUBLIC									
1990-September	557.6	450.9	265.7	152.9	162.2	50.1	22.4	71.9	1,732.5
1991-September	553.8	436.1	271.1	147.5	158.5	49.3	21.5	75.2	1,711.6
1992-September	532.9	430.2	271.1	143.9	159.4	47.4	20.2	71.9	1,675.5
1993—									
August	529.6	398.8	275.5	141.2	162.0	46.6	20.4	74.6	1,647.4
September	527.6	394.1	275.9	141.1	159.6	47.1	20.2	74.6	1,638.8
October	511.9	386.7	275.2	140.0	157.0	46.2	20.5	74.5	1,611.1
November	523.3	383.5	275.9	139.8	155.1	46.1	20.2	74.9	1,619.4
December	525.0	382.5	278.5	139.8	157.4	46.7	20.4	74.6	1,625.1
1994—									
January(r)	515.7	375.3	272.1	138.2	155.1	45.5	20.6	72.6	1,595.2
February(r)	505.7	376.0	271.9	137.0	154.8	44.9	20.6	72.4	1,582.8
March(r)	505.9	376.4	271.4	137.3	153.3	44.7	20.4	73.5	1,583.8
April(r)	500.2	373.7	270.2	137.4	154.0	44.7	20.6	73.3	1,574.9
May(r)	505.6	373.5	268.1	136.8	152.4	44.6	20.7	73.9	1,576.4
June(r)	501.5	371.5	270.9	135.2	151.6	44.7	20.7	73.6	1,570.9
July	508.0	369.5	261.5	133.0	151.2	43.2	20.4	71.7	1,557.7
August	510.0	372.5	266.4	132.8	151.4	43.0	20.4	72.7	1,568.1
September	508.0	372.5	266.9	132.2	151.6	44.8	20.6	72.8	1,568.1
PRIVATE AND PUBLIC									
1990-September	2,141.1	1,680.8	916.6	517.9	517.7	147.3	61.4	127.5	6,108.9
1991-September	2,025.3	1,574.0	904.6	511.2	513.6	148.3	62.0	129.3	5,867.1
1992-September	2,004.8	1,555.4	923.5	470.9	548.4	143.1	55.0	135.6	5,835.3
1993—									
August	1,964.5	1,477.4	933.7	476.0	562.9	150.0	53.6	133.3	5,750.3
September	1,959.5	1,464.7	930.5	472.1	562.1	150.8	53.2	135.1	5,726.7
October	1,952.1	1,446.3	944.9	473.5	546.2	147.6	52.9	133.9	5,696.4
November	1,972.1	1,438.7	950.8	477.6	546.5	146.8	53.0	135.6	5,721.8
December	1,980.7	1,431.7	961.5	468.7	547.9	146.8	53.6	136.1	5,727.2
1994—									
January(r)	1,979.3	1,434.1	962.8	484.5	545.6	138.9	56.4	130.7	5,732.5
February(r)	1,954.1	1,438.2	972.4	480.4	550.1	139.7	56.6	130.5	5,721.6
March(r)	1,973.4	1,442.5	964.7	478.5	549.3	140.5	56.7	131.7	5,738.2
April(r)	1,967.0	1,468.1	953.5	467.6	530.4	138.9	56.7	127.4	5,710.3
May(r)	1,986.0	1,474.4	953.9	466.0	532.3	140.2	56.6	129.4	5,739.5
June(r)	1,982.0	1,478.9	960.9	466.1	532.4	140.6	56.1	129.5	5,747.7
July	1,990.9	1,525.4	923.4	465.6	551.0	138.3	59.1	129.5	5,782.4
August	1,992.2	1,546.0	929.2	471.9	553.9	138.3	57.8	131.7	5,819.9
September	1,988.9	1,535.6	927.8	475.6	552.7	139.5	58.3	132.7	5,809.8

TABLE 3. EMPLOYED WAGE AND SALARY EARNERS, STATES AND TERRITORIES, PERSONS
(*000)

Month	NSW	Vic.	Qld	SA	WA	Tas.	NT	ACT	Aust.
PRIVATE									
1990-September	1,578.9	1,232.2	649.2	362.5	352.4	96.4	40.8	55.6	4,367.9
1991-September	1,469.5	1,141.5	631.5	360.8	352.5	98.5	42.4	54.2	4,151.0
1992-September	1,471.0	1,129.3	650.0	324.4	386.6	95.4	36.4	63.8	4,156.9
1993—									
August	1,431.5	1,074.8	657.6	333.9	399.9	102.7	34.5	59.0	4,093.9
September	1,431.7	1,074.9	652.1	328.4	400.2	103.4	34.6	60.4	4,085.8
October	1,448.6	1,060.0	681.0	331.2	388.3	100.5	33.4	60.1	4,102.9
November	1,466.3	1,063.3	687.8	338.2	392.8	100.4	33.8	61.1	4,143.7
December	1,477.4	1,058.4	689.6	328.0	393.9	100.7	32.9	62.4	4,143.3
1994—									
January(r)	1,445.0	1,048.3	684.0	345.7	386.8	93.0	33.3	56.0	4,092.0
February(r)	1,458.9	1,068.6	697.6	346.4	393.8	95.9	34.4	57.5	4,153.0
March(r)	1,466.5	1,078.3	694.7	344.3	396.5	96.6	34.9	57.9	4,169.5
April(r)	1,464.1	1,085.8	677.8	331.7	378.7	94.7	35.4	54.7	4,122.9
May(r)	1,471.9	1,098.6	682.9	331.6	383.6	96.1	36.0	56.3	4,156.9
June(r)	1,468.7	1,098.7	685.4	329.2	382.9	95.1	36.1	55.9	4,151.9
July	1,469.3	1,147.8	655.4	331.7	395.3	94.8	39.0	57.3	4,190.6
August	1,478.9	1,169.0	662.2	338.2	401.7	94.6	38.9	59.2	4,242.6
September	1,481.0	1,168.0	658.3	340.7	398.9	94.4	39.5	59.8	4,240.7
PUBLIC									
1990-September	563.4	456.4	266.1	154.2	164.2	50.1	22.5	71.7	1,748.6
1991-September	559.3	441.6	271.3	148.8	160.4	49.3	21.6	75.0	1,727.4
1992-September	538.2	436.2	271.4	145.2	161.2	47.3	20.3	71.7	1,691.5
1993—									
August	532.6	402.4	276.2	141.4	162.7	48.0	20.4	74.4	1,658.0
September	532.9	399.6	276.2	142.4	161.4	47.0	20.3	74.5	1,654.2
October	510.3	388.5	276.9	140.6	157.4	46.7	20.6	74.1	1,615.1
November	527.9	388.6	278.0	140.5	157.0	46.8	20.3	74.7	1,633.8
December	524.4	386.7	277.4	140.6	157.1	47.2	20.5	74.3	1,628.1
1994—									
January(r)	491.0	363.6	262.0	131.9	148.4	42.5	20.2	71.8	1,531.4
February(r)	499.0	369.1	269.2	135.4	152.7	42.3	20.2	72.2	1,560.1
March(r)	512.3	373.2	274.0	137.4	154.0	44.6	20.4	73.8	1,589.8
April(r)	504.5	372.3	271.3	138.2	154.7	44.8	20.6	73.8	1,580.2
May(r)	513.0	374.2	269.8	137.7	152.7	45.5	20.9	74.5	1,588.3
June(r)	510.8	374.0	274.2	137.2	154.9	45.0	21.0	74.6	1,591.7
July	501.1	369.7	261.7	133.3	150.9	44.5	20.4	71.6	1,553.1
August	512.8	376.0	267.1	133.0	152.0	44.2	20.4	72.5	1,578.0
September	513.0	377.8	267.2	133.4	153.2	44.8	20.7	72.7	1,582.8
PRIVATE AND PUBLIC									
1990-September	2,142.2	1,688.6	915.2	516.7	516.6	146.5	63.3	127.3	6,116.5
1991-September	2,028.9	1,583.1	902.9	509.6	512.9	147.7	64.0	129.2	5,878.4
1992-September	2,009.2	1,565.5	921.4	469.5	547.8	142.8	56.7	135.5	5,848.4
1993—									
August	1,964.1	1,477.2	933.8	475.3	562.6	150.6	54.9	133.4	5,751.9
September	1,964.6	1,474.5	928.3	470.8	561.6	150.5	54.9	134.9	5,740.0
October	1,958.8	1,448.5	957.8	471.8	545.6	147.2	54.0	134.2	5,718.0
November	1,994.2	1,451.8	965.7	478.7	549.8	147.2	54.1	135.9	5,777.5
December	2,001.7	1,445.1	967.1	468.7	551.0	147.9	53.4	136.6	5,771.4
1994—									
January(r)	1,936.0	1,411.9	945.9	477.6	535.2	135.6	53.5	127.8	5,623.4
February(r)	1,957.9	1,437.7	966.7	481.8	546.5	138.3	54.5	129.7	5,713.2
March(r)	1,978.8	1,451.5	968.7	481.7	550.5	141.2	55.3	131.7	5,759.4
April(r)	1,968.6	1,458.1	949.0	469.9	533.4	139.5	56.0	128.5	5,703.1
May(r)	1,984.9	1,472.8	952.7	469.3	536.2	141.6	56.9	130.8	5,745.2
June(r)	1,979.5	1,472.7	959.6	466.4	537.8	140.1	57.1	130.5	5,743.6
July	1,970.4	1,517.5	917.1	465.0	546.2	139.3	59.3	128.9	5,743.7
August	1,991.7	1,545.0	929.2	471.2	553.6	138.9	59.3	131.7	5,820.6
September	1,994.0	1,545.8	925.6	474.1	552.2	139.2	60.2	132.5	5,823.5

TABLE 4. GROSS EARNINGS, STATES AND TERRITORIES, SECTORS
(\$m)

<i>Year/Quarter</i>	<i>NSW</i>	<i>Vic.</i>	<i>Qld</i>	<i>SA</i>	<i>WA</i>	<i>Tas.</i>	<i>NT</i>	<i>ACT</i>	<i>Aust.</i>
PRIVATE									
1990-91	39,982.4	30,123.4	14,589.8	8,156.1	8,698.3	2,197.8	964.9	1,219.6	105,932.9
1991-92	39,513.3	28,614.4	15,025.2	7,873.7	9,160.4	2,289.1	879.5	1,377.8	104,733.6
1992-93	40,048.1	29,233.8	16,399.8	7,911.9	10,311.9	2,329.1	832.4	1,360.4	108,427.3
1993-94	40,901.1	29,074.9	16,379.2	8,319.9	10,851.0	2,261.3	829.9	1,290.8	109,908.2
<i>1992—</i>									
March	9,549.5	6,927.8	3,616.5	1,812.4	2,221.5	561.7	188.4	347.6	25,225.4
June	10,022.5	7,235.6	3,863.6	1,940.2	2,415.2	566.6	194.1	376.4	26,614.1
September	9,979.2	7,314.0	4,012.5	1,932.4	2,514.3	577.0	210.3	367.5	26,907.1
December	10,331.7	7,562.3	4,264.7	2,066.0	2,577.2	590.0	212.3	337.8	27,941.9
<i>1993—</i>									
March	9,826.5	7,115.1	3,914.8	1,912.9	2,494.1	564.6	191.0	312.7	26,331.6
June	9,910.7	7,242.5	4,207.8	2,000.7	2,726.3	597.6	218.8	342.4	27,246.7
September	9,946.2	7,195.0	3,960.4	2,094.3	2,764.8	578.4	214.3	330.7	27,084.3
December	10,498.9	7,253.0	4,198.3	2,167.2	2,753.4	597.8	203.0	352.2	28,023.9
<i>1994—</i>									
March(r)	9,929.5	6,976.1	3,982.1	2,087.6	2,626.6	535.5	197.2	306.9	26,641.7
June(r)	10,673.3	7,671.9	4,284.6	2,062.2	2,652.6	556.8	216.9	318.1	28,436.4
September	10,400.0	8,052.9	4,215.3	2,075.0	2,774.9	569.6	245.5	345.9	28,679.0
PUBLIC									
1990-91	16,633.1	13,386.1	7,185.0	4,486.4	4,607.5	1,399.6	683.2	2,460.6	50,841.4
1991-92	17,313.9	13,971.1	7,822.1	4,599.1	4,942.1	1,474.5	668.4	2,611.3	53,402.5
1992-93	17,613.4	14,322.4	8,453.9	4,592.5	4,994.2	1,454.0	709.2	2,621.9	54,761.5
1993-94	18,116.7	13,445.9	8,750.7	4,854.4	5,259.2	1,477.7	760.9	2,992.9	55,658.5
<i>1992—</i>									
March	4,337.9	3,448.2	1,933.8	1,155.9	1,229.8	366.2	172.2	669.2	13,313.4
June	4,281.2	3,420.6	1,952.7	1,123.3	1,194.8	349.3	154.0	583.8	13,059.7
September	4,372.3	3,465.4	2,006.1	1,196.7	1,278.4	376.6	177.8	670.4	13,543.6
December	4,577.6	3,766.0	2,290.4	1,144.9	1,319.5	372.3	180.5	684.6	14,335.8
<i>1993—</i>									
March	4,127.9	3,466.2	1,999.9	1,107.9	1,169.9	332.6	158.4	614.8	12,977.6
June	4,535.6	3,624.9	2,157.5	1,143.1	1,226.4	372.4	192.6	652.1	13,904.6
September	4,471.5	3,407.1	2,119.0	1,236.4	1,323.0	360.1	186.0	761.0	13,864.1
December	4,590.1	3,394.5	2,309.6	1,213.3	1,367.1	376.1	200.9	782.1	14,233.6
<i>1994—</i>									
March(r)	4,314.6	3,104.5	2,052.9	1,143.1	1,232.5	325.5	169.0	648.9	12,990.8
June(r)	4,663.2	3,418.4	2,252.7	1,271.2	1,331.4	374.2	207.4	787.0	14,305.4
September	4,478.3	3,081.3	2,211.3	1,199.1	1,187.7	330.5	178.7	674.3	13,341.3
PRIVATE AND PUBLIC									
1990-91	56,615.5	43,509.4	21,774.8	12,642.5	13,305.9	3,597.4	1,648.1	3,680.2	156,773.7
1991-92	56,827.3	42,585.5	22,847.3	12,472.8	14,102.5	3,763.7	1,547.9	3,989.1	158,136.1
1992-93	57,661.4	43,556.2	24,853.7	12,504.5	15,306.1	3,783.0	1,541.6	3,982.2	163,188.8
1993-94	59,017.8	42,520.9	25,129.9	13,174.3	16,110.2	3,739.0	1,590.8	4,283.8	165,566.7
<i>1992—</i>									
March	13,887.5	10,376.0	5,550.3	2,968.3	3,451.4	927.9	360.6	1,016.9	38,538.8
June	14,303.7	10,656.2	5,816.3	3,063.5	3,609.9	915.9	348.1	960.3	39,673.8
September	14,351.5	10,779.3	6,018.6	3,129.1	3,792.6	953.6	388.1	1,037.8	40,450.7
December	14,909.2	11,328.2	6,555.1	3,210.9	3,896.7	962.3	392.8	1,022.4	42,277.7
<i>1993—</i>									
March	13,954.4	10,581.3	5,914.7	3,020.7	3,664.0	897.2	349.3	927.5	39,309.1
June	14,446.3	10,867.4	6,365.3	3,143.7	3,952.7	970.0	411.3	994.5	41,151.3
September	14,417.7	10,602.1	6,079.4	3,330.7	4,087.9	938.5	400.3	1,091.8	40,948.5
December	15,089.0	10,647.5	6,507.9	3,380.5	4,120.5	973.9	403.9	1,134.3	42,257.5
<i>1994—</i>									
March(r)	14,244.1	10,080.6	6,035.0	3,230.7	3,859.1	861.1	366.2	955.8	39,632.5
June(r)	15,336.5	11,090.2	6,537.3	3,333.4	3,984.0	931.0	424.3	1,105.1	42,741.9
September	14,878.2	11,134.2	6,426.7	3,274.1	3,962.6	900.1	424.1	1,020.2	42,020.3

TABLE 5. EMPLOYED WAGE AND SALARY EARNERS, STATES AND TERRITORIES, PERSONS — TREND

State, Territory/Sector	Number of employees ('000)				
	September 1993	June 1994(r)	July 1994	August 1994	September 1994
New South Wales	1,960.1	1,983.3	1,987.6	1,991.4	1,993.2
Private	1,437.4	1,478.6	1,481.6	1,484.0	1,484.7
Public	522.8	504.7	506.1	507.4	508.5
Commonwealth	118.0	114.9	115.1	115.4	115.8
State	351.4	336.9	338.2	339.3	340.2
Local	53.4	52.9	52.8	52.6	52.5
Victoria	1,460.2	1,495.3	1,513.2	1,530.7	1,547.9
Private	1,067.9	1,123.1	1,141.5	1,159.3	1,176.7
Public	392.3	372.2	371.7	371.3	371.2
Commonwealth	91.2	85.0	83.9	82.9	81.9
State	255.3	241.9	242.3	242.9	243.7
Local	45.9	45.3	45.4	45.6	45.6
Queensland	937.6	945.6	938.3	931.1	924.6
Private	661.9	678.1	671.7	665.3	659.4
Public	275.7	267.5	266.6	265.8	265.2
Commonwealth	46.1	44.1	43.9	43.7	43.5
State	195.7	189.9	189.2	188.6	188.3
Local	34.0	33.5	33.5	33.5	33.4
South Australia	473.6	467.9	468.1	469.2	471.0
Private	332.8	332.9	334.1	336.2	338.9
Public	140.7	135.0	134.0	133.0	132.1
Commonwealth	25.8	24.6	24.6	24.5	24.5
State	105.8	101.5	100.6	99.7	98.9
Local	9.1	8.8	8.8	8.7	8.7
Western Australia	556.7	540.3	543.8	547.9	552.7
Private	397.7	388.3	392.2	396.5	401.5
Public	159.1	152.0	151.6	151.3	151.2
Commonwealth	23.2	21.9	21.8	21.8	21.8
State	123.5	116.7	116.4	116.1	115.9
Local	12.4	13.4	13.4	13.5	13.5
Tasmania	149.7	139.4	139.3	139.1	138.9
Private	103.0	95.3	95.3	95.2	95.1
Public	46.8	44.1	44.0	43.9	43.8
State	34.5	32.7	32.5	32.4	32.3
Northern Territory	53.2	57.3	57.6	58.0	58.4
Private	32.9	36.7	37.1	37.5	37.9
Public	20.3	20.6	20.5	20.5	20.5
Australian Capital Territory	134.4	129.7	130.3	130.9	131.6
Private	59.8	56.6	57.3	58.2	59.2
Public	74.6	73.1	72.9	72.7	72.5
Australia	5,724.9	5,759.1	5,777.9	5,797.4	5,817.0
Private	4,093.3	4,189.6	4,210.8	4,232.1	4,253.2
Public	1,631.6	1,569.5	1,567.1	1,565.3	1,563.8
Commonwealth	369.4	355.3	353.6	352.0	350.6
State	1,101.8	1,055.1	1,054.5	1,054.3	1,054.5
Local	160.4	159.0	159.0	158.9	158.6

TABLE 6. EMPLOYED WAGE AND SALARY EARNERS, STATES AND TERRITORIES, PERSONS — SEASONALLY ADJUSTED

State, Territory/Sector	Number of employees (^{'000})				
	September 1993	June 1994(r)	July 1994	August 1994	September 1994
New South Wales	1,959.5	1,982.0	1,990.9	1,992.2	1,988.9
Private	1,432.0	1,480.5	1,482.9	1,482.2	1,480.9
Public	527.6	501.5	508.0	510.0	508.0
Commonwealth	118.7	114.0	115.0	116.4	115.9
State	355.5	334.5	340.4	341.0	339.6
Local	53.4	53.0	52.6	52.7	52.5
Victoria	1,464.7	1,478.9	1,525.4	1,546.0	1,535.6
Private	1,070.6	1,107.4	1,156.0	1,173.5	1,163.1
Public	394.1	371.5	369.5	372.5	372.5
Commonwealth	90.9	86.4	81.9	82.4	82.0
State	257.1	240.3	240.5	244.8	245.5
Local	46.1	44.8	47.0	45.3	45.0
Queensland	930.5	960.9	923.4	929.2	927.8
Private	654.6	690.0	661.9	662.9	660.9
Public	275.9	270.9	261.5	266.4	266.9
Commonwealth	46.3	44.3	43.3	43.7	43.7
State	195.6	193.2	184.3	189.4	189.9
Local	33.9	33.4	33.9	33.3	33.3
South Australia	472.1	466.1	465.6	471.9	475.6
Private	331.1	330.9	332.6	339.1	343.4
Public	141.1	135.2	133.0	132.8	132.2
Commonwealth	26.0	24.4	24.5	24.7	24.4
State	106.0	101.8	100.0	99.1	98.9
Local	9.2	8.9	8.4	8.9	8.8
Western Australia	562.1	532.4	551.0	553.9	552.7
Private	402.5	380.8	399.8	402.5	401.1
Public	159.6	151.6	151.2	151.4	151.6
Commonwealth	23.1	22.1	21.6	21.8	21.9
State	123.9	116.0	116.4	115.9	116.4
Local	12.5	13.6	13.3	13.6	13.4
Tasmania	150.8	140.6	138.3	138.3	139.5
Private	103.7	95.9	95.1	95.3	94.7
Public	47.1	44.7	43.2	43.0	44.8
State	34.8	33.4	32.1	31.3	33.2
Northern Territory	53.2	56.1	59.1	57.8	58.3
Private	33.0	35.4	38.7	37.3	37.7
Public	20.2	20.7	20.4	20.4	20.6
Australian Capital Territory	135.1	129.5	129.5	131.7	132.7
Private	60.4	55.9	57.8	59.0	59.9
Public	74.6	73.6	71.7	72.7	72.8
Australia	5,726.7	5,747.7	5,782.4	5,819.9	5,809.8
Private	4,087.9	4,176.8	4,224.8	4,251.8	4,241.7
Public	1,638.8	1,570.9	1,557.7	1,568.1	1,568.1
Commonwealth	369.8	357.4	349.3	352.4	351.2
State	1,108.6	1,054.9	1,048.4	1,056.7	1,058.9
Local	160.3	158.6	159.9	159.0	158.0

TABLE 7. EMPLOYED WAGE AND SALARY EARNERS, STATES AND TERRITORIES

State, Territory/Sector	Number of employees ('000)						Gross earnings	
	September 1993	June 1994(r)	July 1994	August 1994		September 1994		September Quarter 1994
	Persons	Persons	Persons	Males	Females	Persons	Persons	\$m
New South Wales	1,964.6	1,979.5	1,970.4	1,070.2	921.5	1,991.7	1,994.0	14,878.2
Private	1,431.7	1,468.7	1,469.3	800.4	678.5	1,478.9	1,481.0	10,400.0
Public	532.9	510.8	501.1	269.8	243.0	512.8	513.0	4,478.3
Commonwealth	118.0	114.4	114.5	68.2	46.9	115.1	115.2	1,154.2
State	361.4	343.4	334.0	163.5	181.5	345.1	345.2	2,900.1
Local	53.5	53.0	52.5	38.1	14.5	52.6	52.6	423.9
Victoria	1,474.5	1,472.7	1,517.5	821.1	723.9	1,545.0	1,545.8	11,134.2
Private	1,074.9	1,098.7	1,147.8	636.5	532.5	1,169.0	1,168.0	8,052.9
Public	399.6	374.0	369.7	184.5	191.5	376.0	377.8	3,081.3
Commonwealth	90.5	86.6	81.5	47.0	35.1	82.1	81.6	739.9
State	262.9	242.0	242.0	115.7	132.7	248.4	251.1	2,053.0
Local	46.2	45.4	46.2	21.9	23.6	45.5	45.1	288.4
Queensland	928.3	959.6	917.1	508.0	421.2	929.2	925.6	6,426.7
Private	652.1	685.4	655.4	363.8	298.4	662.2	658.3	4,215.3
Public	276.2	274.2	261.7	144.2	122.9	267.1	267.2	2,211.3
Commonwealth	46.1	44.8	43.3	25.0	18.5	43.5	43.5	377.2
State	196.4	195.7	184.8	93.1	97.3	190.4	190.6	1,588.5
Local	33.6	33.6	33.6	26.1	7.1	33.2	33.1	245.7
South Australia	470.8	466.4	465.0	245.8	225.3	471.2	474.1	3,274.1
Private	328.4	329.2	331.7	180.1	158.1	338.2	340.7	2,075.0
Public	142.4	137.2	133.3	65.7	67.3	133.0	133.4	1,199.1
Commonwealth	25.9	24.8	24.5	15.7	8.9	24.6	24.4	218.2
State	107.4	103.5	100.5	44.0	55.6	99.6	100.2	921.0
Local	9.1	9.0	8.3	6.0	2.8	8.8	8.8	60.0
Western Australia	561.6	537.8	546.2	293.0	260.6	553.6	552.2	3,962.6
Private	400.2	382.9	395.3	217.0	184.7	401.7	398.9	2,774.9
Public	161.4	154.9	150.9	76.0	76.0	152.0	153.2	1,187.7
Commonwealth	22.8	22.0	21.7	12.9	8.8	21.7	21.5	187.7
State	126.2	119.4	116.1	54.7	62.1	116.8	118.5	921.2
Local	12.4	13.5	13.1	8.4	5.1	13.5	13.3	78.8
Tasmania	150.5	140.1	139.3	74.6	64.3	138.9	139.2	900.1
Private	103.4	95.1	94.8	52.2	42.5	94.6	94.4	569.6
Public	47.0	45.0	44.5	22.4	21.8	44.2	44.8	330.5
Commonwealth	7.7	7.6	7.5	4.8	2.7	7.5	7.5	61.8
State	34.8	33.5	33.1	14.8	18.0	32.8	33.3	242.3
Local	4.4	3.9	3.9	2.8	1.1	3.9	3.9	26.4
Northern Territory	54.9	57.1	59.3	30.8	28.5	59.3	60.2	424.1
Private	34.6	36.1	39.0	21.1	17.9	38.9	39.5	245.5
Public	20.3	21.0	20.4	9.8	10.6	20.4	20.7	178.7
Commonwealth	3.7	3.8	3.6	2.0	1.6	3.6	3.6	32.6
State	15.4	15.9	15.4	6.9	8.5	15.5	15.7	138.9
Local	1.2	1.4	1.4	0.9	0.5	1.4	1.4	7.1
Australian Capital Territory	134.9	130.5	128.9	67.6	64.1	131.7	132.5	1,020.2
Private	60.4	55.9	57.3	28.1	31.1	59.2	59.8	345.9
Public	74.5	74.6	71.6	39.5	33.0	72.5	72.7	674.3
Commonwealth	54.1	54.9	52.4	29.9	22.9	52.8	52.9	512.6
State	20.3	19.7	19.2	9.6	10.1	19.7	19.8	161.7
Australia	5,740.0	5,743.6	5,743.7	3,111.1	2,709.5	5,820.6	5,823.5	42,020.3
Private	4,085.8	4,151.9	4,190.6	2,299.1	1,943.5	4,242.6	4,240.7	28,679.0
Public	1,654.2	1,591.7	1,553.1	812.0	766.0	1,578.0	1,582.8	13,341.3
Commonwealth	368.9	358.9	348.9	205.5	145.4	350.9	350.4	3,284.3
State	1,124.8	1,073.1	1,045.2	502.3	565.8	1,068.1	1,074.3	8,926.7
Local	160.5	159.7	159.0	104.1	54.8	158.9	158.1	1,130.3

TABLE 8. EMPLOYED WAGE AND SALARY EARNERS, STATES AND TERRITORIES, PUBLIC INSTITUTIONAL SECTOR

State, Territory/Sector	Public Trading Enterprises		Financial Enterprises		General Government		Total Public	
	August 1994	September Quarter 1994	August 1994	September Quarter 1994	August 1994	September Quarter 1994	August 1994	September Quarter 1994
	Persons ('000)	Gross Earnings (\$m)	Persons ('000)	Gross Earnings (\$m)	Persons ('000)	Gross Earnings (\$m)	Persons ('000)	Gross Earnings (\$m)
New South Wales								
Total Public	105.4	1,141.3	23.6	215.2	383.9	3,121.7	512.8	4,478.3
Commonwealth	50.9	588.3	17.6	162.7	46.6	403.2	115.1	1,154.2
State	47.5	493.1	5.9	52.4	291.7	2,354.7	345.1	2,900.1
Local	7.1	60.0	—	—	45.6	363.9	52.6	423.9
Victoria								
Total Public	68.8	684.6	17.1	136.6	290.1	2,260.2	376.0	3,081.3
Commonwealth	34.8	339.3	13.8	109.1	33.5	291.5	82.1	739.9
State	32.9	333.5	3.3	27.5	212.2	1,692.0	248.4	2,053.0
Local	1.1	11.7	—	—	44.4	276.7	45.5	288.4
Queensland								
Total Public	33.9	307.4	5.6	48.8	227.6	1,855.1	267.1	2,211.3
Commonwealth	17.7	163.8	5.5	48.2	20.3	165.1	43.5	377.2
State	11.1	101.1	0.1	0.5	179.3	1,486.8	190.4	1,588.5
Local	5.2	42.5	—	—	28.0	203.2	33.2	245.7
South Australia								
Total Public	21.0	241.6	6.4	55.8	105.6	901.7	133.0	1,199.1
Commonwealth	11.3	103.6	2.2	21.0	11.1	93.6	24.6	218.2
State	9.6	137.5	4.2	34.8	85.8	748.6	99.6	921.0
Local	0.1	0.5	—	—	8.7	59.5	8.8	60.0
Western Australia								
Total Public	25.5	234.9	6.3	49.3	120.1	903.6	152.0	1,187.7
Commonwealth	9.0	83.3	2.7	21.2	9.9	83.2	21.7	187.7
State	16.5	151.5	3.6	28.1	96.7	741.5	116.8	921.2
Local	—	—	—	—	13.5	78.8	13.5	78.8
Tasmania								
Total Public	5.6	50.9	0.7	5.8	38.0	273.8	44.2	330.5
Commonwealth	2.7	22.4	0.6	5.5	4.2	33.9	7.5	61.8
State	2.5	25.6	—	0.3	30.2	216.4	32.8	242.3
Local	0.4	2.9	—	—	3.5	23.5	3.9	26.4
Northern Territory								
Total Public	0.8	8.6	0.2	1.8	19.4	168.2	20.4	178.7
Commonwealth	0.8	8.6	0.2	1.5	2.6	22.5	3.6	32.6
State	—	—	—	0.3	15.4	138.6	15.5	138.9
Local	—	—	—	—	1.4	7.1	1.4	7.1
Australian Capital Territory								
Total Public	5.2	51.7	1.1	10.9	66.2	611.7	72.5	674.3
Commonwealth	2.9	26.2	1.1	10.9	48.8	475.6	52.8	512.6
State	2.3	25.6	—	—	17.3	136.1	19.7	161.7
Australia								
Total Public	266.1	2,721.0	61.0	524.2	1,250.8	10,096.1	1,578.0	13,341.3
Commonwealth	130.0	1,335.5	43.8	380.2	177.1	1,568.5	350.9	3,284.3
State	122.3	1,267.9	17.2	143.9	928.6	7,514.8	1,068.1	8,926.7
Local	13.8	117.5	—	—	145.1	1,012.8	158.9	1,130.3

TABLE 9. EMPLOYED WAGE AND SALARY EARNERS, AUSTRALIA,
PUBLIC INSTITUTIONAL SECTOR, AUGUST 1994
PERSONS ('000)

<i>Industry</i>	<i>Public Trading Enterprises</i>	<i>Financial Enterprises</i>	<i>General Government</i>	<i>Total Public</i>
Agriculture, forestry, fishing and hunting	0.4	—	4.5	4.9
Mining	0.8	—	—	0.8
Manufacturing	6.8	0.3	3.8	10.8
Electricity, gas and water	68.4	—	8.7	77.1
Construction	0.2	3.3	26.0	29.5
Wholesale trade	1.0	—	0.7	1.8
Retail trade	0.1	—	0.1	0.2
Transport and storage	69.9	—	22.6	92.5
Communication	103.1	—	0.2	103.3
Finance, property and business services	4.9	56.6	13.8	75.4
Public administration and defence(a)	1.0	0.9	337.0	338.9
Community services	1.2	—	821.1	822.3
Recreation, personal and other services	8.1	—	12.4	20.5
Total all industries	266.1	61.0	1,250.8	1,578.0

(a) Excludes members of permanent defence forces and employees of overseas embassies, consulates etc.

TABLE 10. EMPLOYED WAGE AND SALARY EARNERS, AUSTRALIA,
PUBLIC INSTITUTIONAL SECTOR, SEPTEMBER QUARTER 1994
GROSS EARNINGS (\$m)

<i>Industry</i>	<i>Public Trading Enterprises</i>	<i>Financial Enterprises</i>	<i>General Government</i>	<i>Total Public</i>
Agriculture, forestry, fishing and hunting	3.3	—	35.0	38.4
Mining	11.7	—	—	11.7
Manufacturing	62.2	2.8	35.4	100.4
Electricity, gas and water	767.8	—	102.0	869.8
Construction	1.5	27.5	253.6	282.7
Wholesale trade	10.1	—	5.9	16.0
Retail trade	0.7	—	0.6	1.4
Transport and storage	792.4	—	233.6	1,026.0
Communication	963.4	—	0.8	964.2
Finance, property and business services	46.3	485.4	124.4	656.2
Public administration and defence(a)	7.7	8.4	2,676.2	2,692.3
Community services	11.6	—	6,510.0	6,521.6
Recreation, personal and other services	42.3	—	118.3	160.6
Total all industries	2,721.0	524.2	10,096.1	13,341.3

(a) Excludes members of permanent defence forces and employees of overseas embassies, consulates etc.

TABLE 11. EMPLOYED WAGE AND SALARY EARNERS — FULL-TIME AND PART-TIME(a) — AUGUST 1994

	Number of employees (000)					
	Full-time			Part-time		
	Males	Females	Persons	Males	Females	Persons
AUSTRALIA BY INDUSTRY						
Mining	55.2	5.7	60.9	0.6	0.6	1.3
Manufacturing	602.0	181.3	783.3	39.0	60.0	99.0
Electricity, gas and water	68.6	8.8	77.5	0.7	1.7	2.4
Construction	202.4	32.0	234.4	10.9	11.1	22.0
Wholesale trade	232.1	86.9	319.0	22.6	37.1	59.7
Retail trade	233.3	157.6	390.9	126.6	277.7	404.3
Transport and storage	182.5	50.2	232.7	25.7	11.7	37.4
Communication	73.1	26.1	99.2	1.7	7.3	9.0
Finance, property and business services	309.2	255.6	564.8	48.5	132.6	181.1
Public administration and defence(b)	186.1	102.1	288.2	11.4	39.3	50.7
Community services	381.5	495.8	877.2	92.3	467.7	560.0
Recreation, personal and other services(c)	109.8	91.5	201.3	91.6	167.7	259.4
Total all industries(d)	2,639.2	1,494.6	4,133.8	471.9	1,214.9	1,686.8
Private	1,894.1	990.7	2,884.8	405.0	952.9	1,357.9
Public	745.1	503.9	1,249.0	66.8	262.1	328.9
STATES AND TERRITORIES						
New South Wales	905.5	544.5	1,450.0	164.7	377.0	541.7
Victoria	696.8	386.8	1,083.5	124.3	337.2	461.5
Queensland	436.3	230.9	667.2	71.7	190.3	262.0
South Australia	202.4	105.2	307.6	43.4	120.2	163.6
Western Australia	252.7	139.3	392.0	40.3	121.3	161.6
Tasmania	62.7	30.4	93.1	11.9	33.9	45.8
Northern Territory	26.0	18.9	44.9	4.8	9.6	14.4
Australian Capital Territory	56.8	38.6	95.5	10.8	25.5	36.2

(a) See Explanatory Notes, paragraph 26. (b) Excludes members of permanent defence forces and employees of overseas embassies, consulates etc. (c) Excludes private households employing staff. (d) Includes employees of government agencies classified to Agriculture, forestry, fishing and hunting.

TABLE 12. EMPLOYED WAGE AND SALARY EARNERS, AUSTRALIA, PERSONS — TREND

Industry	Number of employees ('000)				
	September 1993	June 1994(r)	July 1994	August 1994	September 1994
Mining	64.4	61.8	61.8	61.9	62.1
Manufacturing	888.0	864.6	871.6	879.4	888.3
Construction	255.3	246.1	249.0	251.6	254.0
Wholesale trade	399.8	398.6	391.1	383.3	375.1
Retail trade	764.8	802.7	802.1	801.7	801.2
Transport and storage	271.9	268.7	270.9	273.0	275.0
Communication	106.6	105.7	106.6	107.5	108.4
Finance, property and business services	741.1	737.1	741.4	745.7	749.9
Public administration and defence(a)	328.7	332.6	335.6	338.6	341.2
Community services	1,360.4	1,399.4	1,405.7	1,412.7	1,420.1
Recreation, personal and other services	454.0	450.0	454.5	458.8	463.3
Total all Industries(b)(c)	5,724.9	5,759.1	5,777.9	5,797.4	5,817.0

(a) Excludes members of permanent defence forces and employees of overseas embassies, consulates, etc. (b) Includes employees of government agencies classified to Agriculture, forestry, fishing and hunting. (c) Derived indirectly by the addition of trend data for the private and public sectors, not by the summation of the component industries because not all industries are trend adjusted.

TABLE 13. EMPLOYED WAGE AND SALARY EARNERS, AUSTRALIA, PERSONS — SEASONALLY ADJUSTED

Industry	Number of employees ('000)				
	September 1993	June 1994(r)	July 1994	August 1994	September 1994
Mining	66.1	61.1	62.6	62.3	62.4
Manufacturing	888.7	849.1	885.3	888.9	888.4
Construction	252.2	245.5	250.3	253.9	252.1
Wholesale trade	401.6	412.4	376.3	378.1	377.0
Retail trade	759.4	806.5	798.6	801.9	801.1
Transport and storage	270.8	269.0	270.3	273.2	275.7
Communication	106.1	104.5	107.0	108.7	108.3
Finance, property and business services	743.4	734.3	744.9	746.9	747.6
Public administration and defence(a)	330.9	327.7	341.4	341.5	339.4
Community services	1,367.3	1,396.8	1,405.1	1,420.6	1,421.8
Recreation, personal and other services	454.7	442.7	459.8	463.3	461.1
Total all Industries(b)(c)	5,726.7	5,747.7	5,782.4	5,819.9	5,809.8

(a) Excludes members of permanent defence forces and employees of overseas embassies, consulates, etc. (b) Includes employees of government agencies classified to Agriculture, forestry, fishing and hunting. (c) Derived indirectly by the addition of seasonally adjusted private and public sector estimates, not by the summation of the component industries because not all industries are seasonally adjusted.

TABLE 14. EMPLOYED WAGE AND SALARY EARNERS, AUSTRALIA — SECTOR AND INDUSTRY

Industry	Number of employees (^{'000})						Gross earnings	
	September 1993	June 1994(r)	July 1994	August 1994		September 1994	September Quarter 1994	
	Persons	Persons	Persons	Males	Females	Persons	Persons	\$m
PRIVATE								
Mining	61.7	59.6	61.3	55.1	6.3	61.4	61.3	893.4
Manufacturing	863.9	836.5	864.7	632.1	239.5	871.5	872.6	7,062.0
Electricity, gas and water	2.8	2.6	2.8	2.2	0.6	2.8	2.8	28.3
Construction	210.9	214.5	221.4	189.6	37.3	226.9	221.7	1,766.3
Wholesale trade	400.9	405.7	372.9	253.5	123.4	376.9	376.2	2,919.1
Retail trade	754.0	797.1	791.2	359.8	435.2	795.0	795.7	3,430.0
Transport and storage	164.6	168.9	176.1	127.5	50.1	177.6	179.3	1,473.0
Finance, property and business services	643.2	656.4	662.7	325.7	344.9	670.6	670.8	5,460.8
Community services	549.4	595.0	599.2	159.8	455.2	615.0	613.5	3,599.5
Recreation, personal and other services(a)	433.2	413.7	433.5	191.3	248.8	440.1	441.7	1,990.2
Total all industries(b)	4,085.8	4,151.9	4,190.6	2,299.1	1,943.5	4,242.6	4,240.7	28,679.0
COMMONWEALTH GOVERNMENT								
Manufacturing	13.1	9.1	5.9	4.6	1.3	6.0	6.0	58.4
Electricity, gas and water	0.7	0.7	0.7	0.5	0.1	0.7	0.7	5.7
Construction	4.1	*4.5	*4.8	*4.2	*0.5	*4.7	*4.8	*45.9
Wholesale trade	0.6	0.6	0.6	0.3	0.2	0.6	0.6	6.6
Retail trade	—	—	—	—	—	—	—	—
Transport and storage	27.8	29.2	24.6	19.5	5.9	25.4	25.3	368.6
Communication	104.5	102.7	101.8	72.0	31.1	103.1	102.8	963.4
Finance, property and business services	53.5	49.5	47.3	18.4	28.6	47.1	46.9	411.2
Public administration and defence(c)	105.6	104.5	108.1	55.2	53.1	108.2	108.0	913.8
Community services	50.5	49.8	48.5	26.9	21.7	48.6	48.7	427.7
Recreation, personal and other services(a)	8.5	8.2	6.6	3.8	2.9	6.6	6.6	82.9
Total all industries(d)	368.9	358.9	348.9	205.5	145.4	350.9	350.4	3,284.3

See footnotes at end of table.

TABLE 14. EMPLOYED WAGE AND SALARY EARNERS, AUSTRALIA — SECTOR AND INDUSTRY—continued

Industry	Number of employees (^{'000})					Gross earnings		\$m
	September 1993	June 1994(r)	July 1994	August 1994		September 1994	September Quarter 1994	
	Persons	Persons	Persons	Males	Females	Persons	Persons	
STATE GOVERNMENT								
Agriculture, forestry, fishing and hunting	4.6	4.9	4.8	3.7	1.1	4.8	4.8	37.7
Mining	3.9	1.5	0.8	0.7	0.1	0.8	0.8	11.7
Manufacturing	6.2	4.1	4.1	3.6	0.4	4.0	4.0	36.3
Electricity, gas and water	71.9	63.5	63.3	54.0	8.3	62.3	62.1	732.9
Construction	30.1	26.6	23.8	18.3	5.0	23.3	23.3	225.3
Wholesale trade	0.8	0.7	0.8	0.5	0.3	0.8	0.9	7.2
Retail trade	0.3	0.2	0.2	0.1	0.1	0.2	0.2	1.4
Transport and storage	72.3	67.8	65.5	59.5	5.5	65.1	64.7	640.3
Finance, property and business services	44.7	30.9	28.3	13.5	14.6	28.2	28.1	244.0
Public administration and defence(c)	89.7	85.9	92.2	55.8	37.5	93.3	93.2	833.0
Community services	786.2	772.6	748.2	286.3	485.2	771.5	778.2	6,080.1
Recreation, personal and other services	14.0	14.3	13.1	6.1	7.5	13.6	14.0	75.9
Total all industries(b)	1,124.8	1,073.1	1,045.2	502.3	565.8	1,068.1	1,074.3	8,926.7
LOCAL GOVERNMENT								
Electricity, gas and water	15.7	14.6	14.1	12.7	1.5	14.1	14.1	131.1
Public administration and defence(c)	133.9	139.0	137.5	86.5	50.8	137.3	136.4	945.4
Other industries	10.9	6.1	7.4	5.0	2.5	7.5	7.6	53.8
Total all industries	160.5	159.7	159.0	104.1	54.8	158.9	158.1	1,130.3
TOTAL PUBLIC								
Agriculture, forestry, fishing and hunting	4.7	4.9	4.8	3.8	1.1	4.9	4.9	38.4
Mining	3.9	1.5	0.8	0.7	0.1	0.8	0.8	11.7
Manufacturing	20.0	14.0	10.8	9.0	1.9	10.8	10.9	100.4
Electricity, gas and water	88.3	78.8	78.1	67.2	9.9	77.1	76.8	869.8
Construction	40.6	32.6	30.1	23.7	5.9	29.5	29.6	282.7
Wholesale trade	1.8	1.6	1.8	1.1	0.7	1.8	1.8	16.0
Retail trade	0.3	0.2	0.2	0.1	0.1	0.2	0.2	1.4
Transport and storage	101.9	98.6	92.0	80.8	11.7	92.5	92.0	1,026.0
Communication	104.7	102.9	101.9	72.1	31.2	103.3	103.0	964.2
Finance, property and business services	98.4	80.6	75.7	32.1	43.3	75.4	75.1	656.2
Public administration and defence(c)	329.3	329.4	337.8	197.5	141.4	338.9	337.6	2,692.3
Community services	837.8	823.7	799.0	314.0	508.3	822.3	829.2	6,521.6
Recreation, personal and other services	22.7	22.8	20.0	10.1	10.4	20.5	20.9	160.6
Total all industries	1,654.2	1,591.7	1,553.1	812.0	766.0	1,578.0	1,582.8	13,341.3

See footnotes at end of table.

TABLE 14. EMPLOYED WAGE AND SALARY EARNERS, AUSTRALIA — SECTOR AND INDUSTRY—*continued*

Industry	Number of employees ('000)						Gross earnings	
	September 1993	June 1994(r)	July 1994	August 1994		September 1994	September Quarter 1994	
	Persons	Persons	Persons	Males	Females	Persons	Persons	\$m
PRIVATE AND PUBLIC								
Mining	65.7	61.1	62.0	55.8	6.3	62.1	62.1	905.1
Manufacturing	883.8	850.5	875.5	641.0	241.3	882.3	883.4	7,162.5
Electricity, gas and water	91.1	81.4	80.9	69.4	10.5	79.9	79.7	898.0
Construction	251.5	247.0	251.5	213.2	43.1	256.4	251.3	2,049.0
Wholesale trade	402.8	407.3	374.7	254.6	124.1	378.7	378.0	2,935.1
Retail trade	754.3	797.3	791.4	359.9	435.3	795.2	795.9	3,431.4
Transport and storage	266.5	267.5	268.1	208.2	61.9	270.1	271.3	2,499.0
Communication	105.8	104.9	106.8	74.8	33.5	108.2	108.0	1,020.6
Finance, property and business services	741.6	737.0	738.4	357.7	388.2	745.9	746.0	6,117.0
Public administration and defence(c)	329.3	329.4	337.8	197.5	141.4	338.9	337.6	2,692.3
Community services	1,387.2	1,418.6	1,398.3	473.8	963.5	1,437.3	1,442.7	10,121.1
Recreation, personal and other services(a)	455.9	436.5	453.5	201.4	259.2	460.6	462.6	2,150.8
Total all industries(d)	5,740.0	5,743.6	5,743.7	3,111.1	2,709.5	5,820.6	5,823.5	42,020.3

(a) Excludes private households employing staff. (b) Includes employees of enterprises classified to Communication. (c) Excludes members of permanent defence forces and employees of overseas embassies, consulates etc. (d) Includes employees of government agencies classified to Agriculture, forestry, fishing and hunting.

TABLE 15. EMPLOYED WAGE AND SALARY EARNERS, NEW SOUTH WALES — SECTOR AND INDUSTRY

Industry	Number of employees (<i>'000</i>)					Gross earnings		
	September 1993	June 1994(r)	July 1994	August 1994		September 1994	September Quarter 1994	
	Persons	Persons	Persons	Males	Females	Persons	Persons	
PRIVATE								
Manufacturing	286.9	286.9	280.0	203.0	79.3	282.4	284.1	2,434.8
Electricity, gas and water, Construction	80.6	82.3	87.3	75.3	12.6	87.9	87.6	654.8
Wholesale trade	160.0	144.6	137.0	89.0	48.4	137.4	137.4	1,106.0
Retail trade	271.1	276.3	276.5	127.7	149.3	277.0	276.5	1,225.9
Transport and storage	58.6	61.9	56.7	39.2	17.1	56.3	57.6	475.4
Finance, property and business services	245.6	257.2	268.1	129.1	138.9	267.9	266.9	2,298.4
Community services	164.8	187.9	194.4	47.6	153.6	201.2	200.2	1,183.7
Recreation, personal and other services(a)	148.5	155.2	150.1	72.7	77.2	149.9	151.5	724.9
Total all industries(b)(e)	1,431.7	1,468.7	1,469.3	800.4	678.5	1,478.9	1,481.0	10,400.0
PUBLIC								
Manufacturing	8.5	4.4	3.6	3.0	0.7	3.7	3.8	35.2
Electricity, gas and water, Construction	43.4	40.0	41.4	34.7	6.6	41.2	41.0	433.1
Wholesale trade	0.5	0.5	0.5	0.3	0.2	0.5	0.5	3.1
Retail trade	—	—	—	—	—	—	—	0.1
Transport and storage	38.2	39.5	39.0	33.4	6.3	39.7	39.6	499.7
Communication	35.6	34.7	34.4	24.2	10.3	34.5	34.6	322.3
Finance, property and business services	44.1	31.9	30.4	13.3	17.1	30.3	30.3	271.3
Public administration and defence(c)	88.4	87.7	92.1	53.5	38.8	92.3	92.3	734.0
Community services	261.6	261.2	250.4	101.9	159.4	261.2	261.5	2,094.8
Recreation, personal and other services	8.6	8.9	7.2	4.1	3.3	7.4	7.5	70.3
Total all industries(d)(e)	532.9	510.8	501.1	269.8	243.0	512.8	513.0	4,478.3
PRIVATE AND PUBLIC								
Mining	17.4	15.3	16.0	15.2	*0.8	16.0	16.1	257.1
Manufacturing	295.3	291.3	283.6	206.0	80.1	286.1	287.9	2,470.0
Electricity, gas and water	34.1	31.9	31.5	26.8	4.5	31.4	31.2	333.6
Construction	90.0	90.4	97.2	83.1	14.6	97.7	97.4	754.3
Wholesale trade	160.5	145.1	137.5	89.3	48.6	137.8	137.9	1,109.0
Retail trade	271.1	276.3	276.5	127.7	149.3	277.0	276.6	1,226.0
Transport and storage	96.8	101.4	95.7	72.6	23.4	96.0	97.2	975.1
Communication	36.0	35.8	37.4	25.7	11.6	37.3	37.6	361.1
Finance, property and business services	289.7	289.1	298.6	142.3	155.9	298.3	297.2	2,569.7
Public administration and defence(c)	88.4	87.7	92.1	53.5	38.8	92.3	92.3	734.0
Community services	426.4	449.2	444.8	149.5	312.9	462.4	461.8	3,278.6
Recreation, personal and other services(a)	157.1	164.1	157.3	76.8	80.5	157.3	158.9	795.2
Total all industries(d)	1,964.6	1,979.5	1,970.4	1,070.2	921.5	1,991.7	1,994.0	14,878.2

(a) Excludes private households employing staff. (b) Includes employees of private enterprises classified to communication. (c) Excludes members of permanent defence forces and employees of overseas embassies, consulates etc. (d) Includes employees of government agencies classified to Agriculture, forestry, fishing and hunting. (e) Includes employees classified to Mining.

TABLE 16. EMPLOYED WAGE AND SALARY EARNERS, VICTORIA — SECTOR AND INDUSTRY

Industry	Number of employees ('000)						Gross earnings	
	September 1993	June 1994(r)	July 1994	August 1994		September 1994	September Quarter 1994	
	Persons	Persons	Persons	Males	Females	Persons	Persons	\$m
PRIVATE								
Mining	2.5	*2.6	2.8	2.4	0.3	2.7	*2.6	*23.7
Manufacturing	271.8	263.7	284.3	202.2	86.1	288.4	288.0	2,344.9
Electricity, gas and water; Construction	42.6	48.9	49.3	43.9	10.1	54.0	51.5	*455.4
Wholesale trade	100.3	115.8	104.4	68.8	37.7	106.5	106.8	827.0
Retail trade	168.4	197.4	201.0	93.9	109.1	203.0	202.9	890.5
Transport and storage	45.6	51.3	56.8	41.2	*15.6	56.8	57.5	451.8
Finance, property and business services	182.9	180.2	192.9	97.2	98.5	195.6	196.5	1,665.2
Community services	149.5	158.1	156.6	40.0	120.1	160.1	159.4	926.8
Recreation, personal and other services(a)	111.2	80.3	98.5	46.2	54.3	100.5	101.6	455.5
Total all Industries(b)	1,074.9	1,098.7	1,147.8	636.5	532.5	1,169.0	1,168.0	8,052.9
PUBLIC								
Agriculture, forestry, fishing and hunting	—	0.4	0.4	0.2	0.2	0.4	0.4	4.4
Mining	1.4	1.1	0.3	0.3	—	0.3	0.3	5.6
Manufacturing	3.7	*3.8	1.3	0.8	*0.4	1.3	1.3	12.3
Electricity, gas and water; Construction	31.0	25.7	23.5	19.7	3.2	23.0	23.2	250.6
Wholesale trade	0.3	0.3	0.3	0.2	0.2	0.4	0.4	3.9
Retail trade	0.1	0.1	0.1	—	0.1	0.1	0.1	0.4
Transport and storage	21.6	19.4	16.0	14.4	1.6	15.9	15.7	154.3
Communication	31.8	31.0	30.4	21.4	10.0	31.3	30.9	300.7
Finance, property and business services	18.5	15.8	16.1	5.8	10.1	16.0	15.8	130.8
Public administration and defence(c)	84.1	76.2	84.4	43.9	39.7	83.6	83.1	648.8
Community services	201.6	194.7	192.1	75.4	123.3	198.7	201.3	1,534.9
Recreation, personal and other services	5.5	5.6	4.9	2.3	2.8	5.1	5.4	34.8
Total all Industries	399.6	374.0	369.7	184.5	191.5	376.0	377.8	3,081.3
PRIVATE AND PUBLIC								
Mining	3.8	3.7	3.2	2.7	0.3	3.0	2.9	29.3
Manufacturing	275.5	267.5	285.6	203.1	86.6	289.6	289.3	2,357.2
Electricity, gas and water	22.1	18.3	18.9	16.3	2.3	18.6	18.5	212.1
Construction	51.4	56.3	53.9	47.3	11.1	58.4	56.1	493.9
Wholesale trade	100.7	116.1	104.7	69.0	37.8	106.9	107.1	830.9
Retail trade	168.4	197.5	201.0	93.9	109.2	203.0	203.0	890.9
Transport and storage	67.2	70.7	72.8	55.6	*17.2	72.8	73.1	606.1
Communication	31.9	31.4	31.6	22.0	10.7	32.7	32.2	312.7
Finance, property and business services	201.4	196.0	209.0	103.0	108.6	211.6	212.3	1,796.0
Public administration and defence(c)	84.1	76.2	84.4	43.9	39.7	83.6	83.1	648.8
Community services	351.1	352.8	348.6	115.4	243.4	358.8	360.7	2,461.7
Recreation, personal and other services(a)	116.7	85.9	103.4	48.5	57.1	105.5	106.9	490.3
Total all Industries(d)	1,474.5	1,472.7	1,517.5	821.1	723.9	1,545.0	1,545.8	11,134.2

(a) Excludes private households employing staff. (b) Includes employees of private enterprises classified to Communication. (c) Excludes members of permanent defence forces and employees of overseas embassies, consulates etc. (d) Includes employees of government agencies classified to Agriculture, forestry, fishing and hunting.

TABLE 17. EMPLOYED WAGE AND SALARY EARNERS, QUEENSLAND — SECTOR AND INDUSTRY

Industry	Number of employees ('000)					Gross earnings		
	September 1993	June 1994(r)	July 1994	August 1994		September 1994	September Quarter 1994	
	Persons	Persons	Persons	Males	Females	Persons	Persons	
PRIVATE								
Mining	17.5	17.6	15.8	14.5	1.5	16.0	16.1	236.4
Manufacturing	131.3	126.4	129.6	98.7	30.5	129.2	129.1	969.2
Electricity, gas and water; Construction	35.3	35.2	41.4	34.6	*6.5	41.1	40.8	319.5
Wholesale trade	54.2	67.3	55.6	42.2	13.9	56.1	55.3	412.7
Retail trade	135.4	140.5	132.3	59.1	72.8	131.9	133.0	543.6
Transport and storage	27.5	26.2	29.6	22.4	8.2	30.6	30.7	239.5
Finance, property and business services	90.6	93.8	75.6	35.4	41.0	76.4	76.9	557.0
Community services	86.2	93.2	91.1	24.9	70.1	95.0	92.3	569.0
Recreation, personal and other services(a)	74.0	85.0	84.3	32.0	53.8	85.8	84.0	367.8
Total all industries(b)	652.1	685.4	655.4	363.8	298.4	662.2	658.3	4,215.3
PUBLIC								
Agriculture, forestry, fishing and hunting	0.1	0.1	0.1	0.1	*0.0	0.1	0.1	0.6
Manufacturing	3.7	2.7	2.7	2.6	0.1	2.7	2.6	25.6
Electricity, gas and water; Construction	21.2	15.3	14.9	12.8	2.0	14.8	14.8	133.2
Wholesale trade	0.5	0.4	0.5	0.3	0.2	0.5	0.5	4.9
Retail trade	0.2	0.1	0.1	—	0.1	0.1	0.1	0.7
Transport and storage	21.3	21.0	19.4	17.6	1.7	19.3	19.2	197.0
Communication	16.0	16.3	16.2	11.7	4.8	16.4	16.5	151.2
Finance, property and business services	11.9	11.2	8.2	3.6	4.6	8.2	8.2	74.2
Public administration and defence(c)	60.5	64.4	63.5	42.3	21.4	63.7	63.6	496.0
Community services	138.6	140.5	133.9	52.2	86.8	139.0	139.4	1,113.9
Recreation, personal and other services	2.1	2.1	2.1	0.8	1.3	2.1	2.1	14.1
Total all industries	276.2	274.2	261.7	144.2	122.9	267.1	267.2	2,211.3
PRIVATE AND PUBLIC								
Mining	17.5	17.6	15.8	14.5	1.5	16.0	16.1	236.4
Manufacturing	135.0	129.2	132.3	101.3	30.6	131.9	131.7	994.8
Electricity, gas and water	12.3	11.7	11.4	9.9	1.5	11.4	11.4	105.7
Construction	44.2	38.9	44.9	37.5	7.0	44.5	44.3	347.1
Wholesale trade	54.8	67.7	56.2	42.5	14.1	56.6	55.8	417.5
Retail trade	135.6	140.6	132.4	59.1	72.9	132.0	133.2	544.3
Transport and storage	48.8	47.3	48.9	40.0	10.0	50.0	50.0	436.6
Communication	16.0	16.4	16.4	11.7	4.8	16.5	16.6	151.9
Finance, property and business services	102.5	105.1	83.8	39.0	45.7	84.7	85.1	631.2
Public administration and defence(c)	60.5	64.4	63.5	42.3	21.4	63.7	63.6	496.0
Community services	224.8	233.7	225.0	77.1	156.8	234.0	231.7	1,682.9
Recreation, personal and other services(a)	76.2	87.1	86.5	32.8	55.1	87.9	86.1	381.9
Total all industries(d)	928.3	959.6	917.1	508.0	421.2	929.2	925.6	6,426.7

(a) Excludes private households employing staff. (b) Includes employees of private enterprises classified to Communication. (c) Excludes members of permanent defence forces and employees of overseas embassies, consulates etc. (d) Includes employees of government agencies classified to Agriculture, forestry, fishing and hunting.

TABLE 18. EMPLOYED WAGE AND SALARY EARNERS, SOUTH AUSTRALIA — SECTOR AND INDUSTRY

Industry	Number of employees ('000)					Gross earnings		
	September 1993	June 1994(r)	July 1994	August 1994		September 1994	September Quarter 1994	
	Persons	Persons	Persons	Males	Females	Persons	Persons	
PRIVATE								
Manufacturing	83.2	81.4	83.0	61.5	22.1	83.6	83.9	629.7
Electricity, gas and water; Construction	11.1	11.2	10.6	8.4	2.6	11.0	10.4	66.9
Wholesale trade	33.8	28.5	25.3	16.7	8.2	24.9	24.8	182.7
Retail trade	58.8	61.5	60.7	27.2	33.9	61.1	60.7	249.4
Transport and storage	13.6	9.1	11.9	9.9	2.6	12.5	12.2	107.6
Finance, property and business services	45.4	47.2	45.7	26.2	23.0	49.2	50.6	345.8
Community services	50.1	58.3	56.7	15.5	41.8	57.4	59.1	316.0
Recreation, personal and other services(a)	30.0	29.3	35.0	12.4	23.4	35.9	36.4	148.8
Total all industries(b)(e)	328.4	329.2	331.7	180.1	158.1	338.2	340.7	2,075.0
PUBLIC								
Manufacturing	2.7	2.0	2.0	1.8	0.2	2.0	2.0	17.9
Electricity, gas and water; Construction	11.2	9.4	9.1	7.4	1.2	8.6	8.6	154.9
Wholesale trade	0.1	0.1	0.1	0.1	—	0.1	0.2	1.4
Retail trade	—	—	—	—	—	—	—	0.3
Transport and storage	6.8	6.5	5.8	5.1	0.6	5.7	5.7	62.0
Communication	8.1	7.7	7.8	5.8	2.1	7.9	7.8	69.8
Finance, property and business services	9.3	8.8	8.6	3.7	4.6	8.3	8.3	74.2
Public administration and defence(c)	19.2	19.1	17.7	10.8	7.6	18.3	18.2	145.8
Community services	81.5	80.4	79.2	29.4	49.3	78.8	79.7	650.1
Recreation, personal and other services	2.7	2.3	2.2	0.9	1.4	2.3	2.2	13.7
Total all industries(d)(e)	142.4	137.2	133.3	65.7	67.3	133.0	133.4	1,199.1
PRIVATE AND PUBLIC								
Manufacturing	86.0	83.4	85.0	63.2	22.3	85.6	85.9	647.6
Electricity, gas and water	7.2	5.9	5.8	4.8	0.6	5.4	5.4	116.0
Construction	15.1	14.8	14.0	11.0	3.2	14.2	13.6	105.9
Wholesale trade	33.9	28.7	25.4	16.8	8.3	25.0	25.0	184.1
Retail trade	58.9	61.6	60.7	27.2	33.9	61.1	60.7	249.6
Transport and storage	20.3	15.6	17.7	15.0	3.2	18.2	17.8	169.6
Communication	8.2	7.8	7.8	5.8	2.2	8.0	7.9	70.0
Finance, property and business services	54.6	56.0	54.3	29.9	27.6	57.5	58.9	420.0
Public administration and defence(c)	19.2	19.1	17.7	10.8	7.6	18.3	18.2	145.8
Community services	131.6	138.7	135.9	45.0	91.2	136.1	138.7	966.1
Recreation, personal and other services(a)	32.7	31.6	37.2	13.4	24.8	38.2	38.5	162.4
Total all industries(d)(e)	470.8	466.4	465.0	245.8	225.3	471.2	474.1	3,274.1

(a) Excludes private households employing staff. (b) Includes employees of private enterprises classified to Communication. (c) Excludes members of permanent defence forces and employees of overseas embassies, consulates etc. (d) Includes employees of government agencies classified to Agriculture, forestry, fishing and hunting. (e) Includes employees classified to mining.

TABLE 19. EMPLOYED WAGE AND SALARY EARNERS, WESTERN AUSTRALIA — SECTOR AND INDUSTRY

Industry	Number of employees ('000)					Gross earnings		
	September 1993	June 1994(r)	July 1994	August 1994		September 1994	September Quarter 1994	
	Persons	Persons	Persons	Males	Females	Persons	Persons	\$m
PRIVATE								
Mining	19.7	17.7	20.8	17.8	3.0	20.8	20.7	303.4
Manufacturing	64.0	53.1	59.2	46.4	13.5	60.0	59.4	469.2
Electricity, gas and water; Construction	32.0	27.2	24.2	19.8	4.6	24.4	22.7	208.0
Wholesale trade	38.5	36.1	37.6	27.3	11.3	38.7	38.6	294.2
Retail trade	75.2	79.6	80.8	32.2	49.1	81.3	81.8	335.1
Transport and storage	12.7	14.1	*14.5	*9.7	*4.9	*14.6	*14.5	*142.4
Finance, property and business services	51.5	53.4	56.5	26.9	30.3	57.2	55.5	433.5
Community services	63.3	64.5	63.6	*20.8	44.1	64.9	64.9	411.8
Recreation, personal and other services(a)	43.3	37.0	38.0	15.9	23.8	39.7	40.7	176.6
Total all industries(b)	400.2	382.9	395.3	217.0	184.7	401.7	398.9	2,774.9
PUBLIC								
Agriculture, forestry, fishing and hunting	1.5	1.4	1.4	1.0	0.4	1.3	1.3	10.8
Manufacturing	0.4	0.1	0.2	0.1	0.1	0.2	0.3	2.0
Electricity, gas and water; Construction	12.9	13.3	11.8	10.2	1.4	11.6	11.6	112.0
Wholesale trade	0.3	0.3	0.3	0.2	0.1	0.3	0.2	2.6
Retail trade	—	—	—	—	—	—	—	—
Transport and storage	9.0	7.6	7.8	7.0	0.8	7.8	7.7	71.8
Communication	8.3	8.2	8.3	5.8	2.5	8.3	8.4	75.5
Finance, property and business services	9.0	8.2	7.9	3.2	4.8	8.0	7.9	62.8
Public administration and defence(c)	26.8	30.0	29.8	17.8	12.5	30.3	29.9	203.7
Community services	91.2	83.8	81.8	29.8	52.7	82.5	84.2	635.7
Recreation, personal and other services	1.9	1.9	1.6	0.8	0.8	1.6	1.6	10.7
Total all industries	161.4	154.9	150.9	76.0	76.0	152.0	153.2	1,187.7
PRIVATE AND PUBLIC								
Mining	19.8	17.7	20.8	17.8	3.0	20.8	20.7	303.4
Manufacturing	64.4	53.2	59.4	46.5	13.6	60.2	59.7	471.2
Electricity, gas and water	9.2	8.6	8.5	7.4	0.9	8.4	8.4	83.8
Construction	35.7	31.9	27.5	22.6	5.1	27.7	26.0	236.2
Wholesale trade	38.8	36.4	37.9	27.5	11.4	38.9	38.9	296.9
Retail trade	75.2	79.6	80.8	32.2	49.1	81.3	81.8	335.1
Transport and storage	21.6	21.7	22.3	16.7	*5.7	22.3	22.2	214.2
Communication	8.4	8.3	8.4	5.9	2.6	8.5	8.5	76.3
Finance, property and business services	60.5	61.6	64.4	30.0	35.1	65.2	63.4	496.3
Public administration and defence(c)	26.8	30.0	29.8	17.8	12.5	30.3	29.9	203.7
Community services	154.5	148.3	145.5	50.6	96.7	147.4	149.1	1,047.5
Recreation, personal and other services(a)	45.2	38.9	39.7	16.8	24.6	41.3	42.3	187.3
Total all industries(d)	561.6	537.8	546.2	293.0	260.6	553.6	552.2	3,962.6

(a) Excludes private households employing staff. (b) Includes employees of private enterprises classified to Communication. (c) Excludes members of permanent defence forces and employees of overseas embassies, consulates etc. (d) Includes employees of government agencies classified to Agriculture, forestry, fishing and hunting.

TABLE 20. EMPLOYED WAGE AND SALARY EARNERS, TASMANIA — SECTOR AND INDUSTRY

Industry	Number of employees ('000)						Gross earnings	
	September 1993	June 1994(r)	July 1994	August 1994		September 1994	September Quarter 1994	
	Persons	Persons	Persons	Males	Females	Persons	Persons	\$m
PRIVATE								
Mining	1.8	1.8	1.7	1.5	0.1	1.7	1.7	24.0
Manufacturing	21.5	19.4	22.4	15.8	6.0	21.8	21.5	169.2
Electricity, gas and water; Construction	4.4	6.8	5.9	5.2	*0.6	5.8	5.8	40.6
Wholesale trade	8.7	8.5	7.4	5.7	1.8	7.6	7.6	51.2
Retail trade	22.7	18.9	17.6	9.0	8.7	17.7	17.7	79.9
Transport and storage	4.3	3.3	3.7	2.7	*0.9	3.6	3.7	28.0
Finance, property and business services	11.2	10.6	9.8	3.6	6.3	9.9	9.9	52.8
Community services	17.5	14.8	14.7	4.4	10.2	14.6	15.1	81.9
Recreation, personal and other services(a)	11.2	10.9	11.5	4.2	7.8	12.0	11.5	41.8
Total all industries(b)	103.4	95.1	94.8	52.2	42.5	94.6	94.4	569.6
PUBLIC								
Agriculture, forestry, fishing and hunting	0.7	0.6	0.6	0.5	0.1	0.6	0.6	4.9
Manufacturing	0.1	0.1	0.1	0.1	—	0.1	0.1	0.7
Electricity, gas and water; Construction	4.5	3.6	3.3	2.8	0.5	3.2	3.2	30.7
Wholesale trade	—	—	—	—	—	—	—	0.2
Retail trade	—	—	—	—	—	—	—	—
Transport and storage	1.8	1.4	1.2	1.2	0.1	1.2	1.2	10.0
Communication	2.2	2.2	2.2	1.7	0.5	2.2	2.3	18.8
Finance, property and business services	1.5	0.9	0.9	0.4	0.5	0.9	0.9	7.6
Public administration and defence(c)	9.6	9.8	9.9	6.2	3.7	9.9	9.8	71.9
Community services	26.0	25.7	25.6	9.3	16.1	25.4	26.0	180.4
Recreation, personal and other services	0.7	0.7	0.6	0.3	0.3	0.6	0.6	5.3
Total all industries	47.0	45.0	44.5	22.4	21.8	44.2	44.8	330.5
PRIVATE AND PUBLIC								
Mining	1.8	1.8	1.7	1.5	0.1	1.7	1.7	24.0
Manufacturing	21.6	19.4	22.5	15.8	6.1	21.9	21.5	169.9
Electricity, gas and water	3.4	2.6	2.4	2.0	0.3	2.3	2.3	24.2
Construction	5.6	7.7	6.8	5.9	*0.8	6.7	6.7	47.1
Wholesale trade	8.8	8.5	7.4	5.7	1.8	7.6	7.6	51.4
Retail trade	22.7	18.9	17.6	9.0	8.7	17.7	17.7	79.9
Transport and storage	6.1	4.8	5.0	3.8	1.0	4.8	4.9	38.0
Communication	2.2	2.2	2.2	1.7	0.6	2.3	2.3	18.9
Finance, property and business services	12.7	11.5	10.7	4.0	6.8	10.7	10.8	60.4
Public administration and defence(c)	9.6	9.8	9.9	6.2	3.7	9.9	9.8	71.9
Community services	43.4	40.5	40.4	13.7	26.3	40.0	41.0	262.3
Recreation, personal and other services(a)	11.9	11.6	12.1	4.6	8.0	12.6	12.1	47.1
Total all industries(d)	150.5	140.1	139.3	74.6	64.3	138.9	139.2	900.1

(a) Excludes private households employing staff. (b) Includes employees of private enterprises classified to Communication. (c) Excludes members of permanent defence forces and employees of overseas embassies, consulates etc. (d) Includes employees of government agencies classified to Agriculture, forestry, fishing and hunting.

TABLE 21. EMPLOYED WAGE AND SALARY EARNERS, NORTHERN TERRITORY — INDUSTRY

Industry	Number of employees (^{'000})						Gross earnings	
	September 1993	June 1994(r)	July 1994	August 1994		September 1994	September Quarter 1994	
	Persons	Persons	Persons	Males	Females	Persons	Persons	\$m
Mining	2.4	1.9	1.5	1.3	*0.3	1.5	1.5	19.9
Manufacturing	2.0	2.1	1.9	1.3	0.6	1.9	2.0	13.1
Electricity, gas and water	0.9	0.9	0.9	0.8	0.2	0.9	0.9	8.5
Construction	4.4	2.2	2.3	1.9	0.4	2.3	2.4	25.2
Wholesale trade	1.7	2.2	2.5	1.6	0.9	2.5	2.5	18.0
Retail trade	7.9	9.2	8.3	4.3	4.3	8.6	8.6	45.6
Transport and storage	1.7	2.1	2.5	2.0	0.6	2.6	2.6	24.7
Communication	1.0	1.1	1.0	0.7	0.3	1.0	1.0	11.0
Finance, property and business services	6.1	6.0	4.7	2.3	2.5	4.8	4.8	35.8
Public administration and defence(a)	5.9	6.4	6.1	3.4	2.7	6.1	6.1	50.1
Community services	16.2	16.6	20.0	7.7	11.7	19.4	20.1	129.5
Recreation, personal and other services(b)	4.8	6.5	7.7	3.5	4.1	7.6	7.7	42.7
Total all industries(c)	54.9	57.1	59.3	30.8	28.5	59.3	60.2	424.1

(a) Excludes members of permanent defence forces and employees of overseas embassies, consulates etc. (b) Excludes private households employing staff. (c) Includes employees of government agencies classified to Agriculture, forestry, fishing and hunting.

TABLE 22. EMPLOYED WAGE AND SALARY EARNERS, AUSTRALIAN CAPITAL TERRITORY — INDUSTRY

Industry	Number of employees (^{'000})						Gross earnings	
	September 1993	June 1994(r)	July 1994	August 1994		September 1994	September Quarter 1994	
	Persons	Persons	Persons	Males	Females	Persons	Persons	\$m
Manufacturing	4.0	4.4	5.1	3.7	1.5	5.2	5.3	38.8
Electricity, gas and water	1.9	1.5	1.5	1.3	0.3	1.5	1.5	14.3
Construction	5.1	4.9	4.9	3.9	1.0	4.9	4.9	39.2
Wholesale trade	3.7	2.6	3.1	2.1	1.2	3.3	3.3	27.3
Retail trade	14.5	13.6	14.1	6.4	7.9	14.4	14.4	60.0
Transport and storage	3.9	4.0	3.2	2.5	0.8	3.3	3.3	34.7
Communication	2.0	2.0	1.9	1.1	0.8	1.9	1.9	18.8
Finance, property and business services	14.1	11.7	12.9	7.2	6.0	13.2	13.5	107.7
Public administration and defence(a)	34.9	35.8	34.3	19.5	15.1	34.6	34.6	342.0
Community services	39.1	38.9	38.1	14.7	24.5	39.2	39.6	292.6
Recreation, personal and other services(b)	11.5	10.9	9.7	5.1	5.0	10.1	10.0	43.9
Total all industries(c)	134.9	130.5	128.9	67.6	64.1	131.7	132.5	1,020.2

(a) Excludes members of permanent defence forces and employees of overseas embassies, consulates etc. (b) Excludes private households employing staff. (c) Includes Mining and employees of government agencies classified to Agriculture, forestry, fishing and hunting.

TABLE 23. EMPLOYED WAGE AND SALARY EARNERS, PRIVATE SECTOR — EMPLOYER UNIT SIZE(a)

	<i>Less than 20 employees</i>		<i>20-99 employees</i>		<i>100 or more employees</i>		<i>Total</i>	
	<i>August 1994</i>	<i>September Quarter 1994</i>	<i>August 1994</i>	<i>September Quarter 1994</i>	<i>August 1994</i>	<i>September Quarter 1994</i>	<i>August 1994</i>	<i>September Quarter 1994</i>
	<i>Persons ('000)</i>	<i>Gross Earnings (\$m)</i>	<i>Persons ('000)</i>	<i>Gross Earnings (\$m)</i>	<i>Persons ('000)</i>	<i>Gross Earnings (\$m)</i>	<i>Persons ('000)</i>	<i>Gross Earnings (\$m)</i>
AUSTRALIA BY INDUSTRY								
Mining	3.9	40.8	6.2	70.7	51.3	782.0	61.4	893.4
Manufacturing	186.1	1,091.5	202.6	1,489.7	482.8	4,480.9	871.5	7,062.0
Electricity, gas and water	0.3	2.0	0.4	3.6	2.1	22.7	2.8	28.3
Construction	136.7	836.4	60.7	602.8	29.4	327.1	226.9	1,766.3
Wholesale trade	156.6	1,108.8	112.6	911.2	107.7	899.2	376.9	2,919.1
Retail trade	292.2	1,259.8	117.1	626.0	385.7	1,544.3	794.9	3,430.0
Transport and storage	61.1	414.9	51.2	386.1	65.3	672.0	177.6	1,473.0
Finance, property and business services	250.6	1,697.7	125.9	1,188.0	294.1	2,575.1	670.6	5,460.8
Community services	203.0	1,146.9	125.0	716.8	286.9	1,735.9	615.0	3,599.5
Recreation, personal and other services(b)	176.3	629.0	141.1	667.2	122.7	694.0	440.1	1,990.2
Total all industries(c)	1,467.8	8,232.2	943.5	6,666.3	1,831.3	13,780.5	4,242.6	28,679.0
STATES AND TERRITORIES								
New South Wales	492.1	2,843.7	299.9	2,215.0	686.8	5,341.3	1,478.9	10,400.0
Victoria	401.8	2,238.4	272.9	1,951.1	494.3	3,863.4	1,169.0	8,052.9
Queensland	236.9	1,338.9	147.2	955.1	278.1	1,921.3	662.2	4,215.3
South Australia	113.2	557.8	86.0	581.4	139.1	935.8	338.2	2,075.0
Western Australia	143.8	821.1	86.8	651.7	171.0	1,302.1	401.7	2,774.9
Tasmania	39.9	200.5	22.3	124.2	32.4	245.0	94.6	569.6
Northern Territory	13.9	82.4	12.4	87.4	12.6	75.7	38.9	245.5
Australian Capital Territory	26.1	149.4	16.0	100.5	17.0	95.9	59.2	345.9

(a) See Appendix 2 and paragraph 11 of Explanatory Notes. (b) Excludes private households employing staff. (c) Includes employees of private enterprises classified to Communication.

EXPLANATORY NOTES

Introduction

1. This publication contains results of the quarterly Survey of Employment and Earnings (SEE) which was introduced in the September quarter 1983. The survey is designed to obtain, from employer units, information on numbers of wage and salary earners employed each month and their quarterly earnings. It replaced the civilian employees series, based principally on information obtained from payroll tax returns, which was discontinued after April 1980.

Scope of the survey

2. All wage and salary earners who received pay in any pay period ending within the quarter were represented in the survey, except:

- members of the permanent defence forces;
- employees of enterprises in the private sector primarily engaged in agriculture, forestry, fishing and hunting;
- employees in private households employing staff;
- employees of overseas embassies, consulates, etc;
- employees based outside Australia.

3. An indicator of the number of employed wage and salary earners out of scope to the year ended June 1994 is shown in the following table:

New South Wales	62,545
Victoria	43,046
Queensland	48,353
South Australia	19,673
Western Australia	25,000
Tasmania	9,802
Northern Territory	4,120
Australian Capital Territory	7,568
<hr/> Australia	<hr/> 220,107

Estimates of the number of employees in private sector agriculture and private households were derived from the Labour Force Survey while data relating to the number of permanent defence force members are based upon information supplied to the ABS by the Department of Defence.

Statistical unit

4. The statistical unit for the survey comprises all activities of an employer in a particular State. Each statistical unit was classified to an industry: see paragraph 8 for more information on classification by industry. In addition, larger employers which are not currently split into separate statistical units are examined to decide whether they should be split for the purpose of reporting their employees. Any changes in reporting arrangements

as a result of such reviews can have an impact on the industry estimates at the time of their implementation.

Survey methodology and design

5. This survey is conducted by mail each quarter from a sample of approximately 10,000 employer units. Of these, approximately 7,500 are in the private sector and 2,500 are in the public sector. However, data for a number of Commonwealth, ACT and NT Government departments are collected electronically.

6. Information on monthly number of employees and quarterly earnings is collected each quarter. For the first and last month of each quarter, only the total number of persons is collected; for the mid month of each quarter, details of males and females, full-time and part-time are collected.

7. Private sector statistical units are stratified by State, industry, and number of employees. Public sector statistical units are further stratified by institutional sector and level of government. An equal probability sample is selected from each stratum.

Classification by industry

8. This publication presents statistics classified by industry. Each statistical unit is classified to an industry which reflects the predominant activity of the business in the State. In a small number of cases where a business has a significant number of employees in more than one industry, a separate statistical unit was created for each industry. Periodically, a review is undertaken to determine whether existing enterprises which are split into separate statistical units should continue to report on that basis.

9. The 1983 edition of the *Australian Standard Industrial Classification* (ASIC), Volume 1 (1201.0) and Volume 2 (1202.0) has been used to classify the statistical units in the survey. Statistics in this publication are presented at ASIC division level only. However, data are available at a finer industry level on request.

Standard Institutional Sector Classification of Australia (SISCA)

10. SISCA is a system for classifying institutional units by broad economic functions and is a key component of the general national accounting framework. For the purposes of these statistics the classification has been used to separate the public sector into public business enterprises (trading and financial) and general government enterprises. Certain public sector data have been classified by SISCA and are presented in Tables 8, 9 and 10.

Employer unit size classification

11. Data presented in Table 23 show the distribution of employees in employer units over three size ranges. Over a period, the composition of these categories will vary as

some employer units migrate from one size group to another due to changes in their employment levels.

Reliability of estimates

12. Estimates are subject to sampling and non-sampling errors. For more information refer to Appendix 1 - Technical Note.

Interpretation of estimates of movements

13. While estimates of employed wage and salary earners are presented in this publication for each month of the quarter, the survey is conducted quarterly and the sample of employer units is updated each quarter to reflect changes in the ABS register of business units, from which the sample is selected. These changes arise from the emergence of new businesses, takeovers and mergers, changes to industry classification, changes in the number of employees, and businesses which have ceased operations. Such updating of the register can contribute to changes in the estimates of employed wage and salary earners, and earnings.

14. Estimates of monthly movements within each quarter arise solely from changes in reported number of employees by employer units but movements between quarters also reflect changes resulting from updating the survey sample.

Seasonal Adjustment

15. Seasonal adjustment is a means of removing the estimated effects of normal seasonal variation from the series so that the effects of other influences on the series can be more clearly recognised. Seasonal adjustment does not aim to remove the irregular or non-seasonal influences which may be present in any particular month. Influences that are volatile or unsystematic can still make it difficult to interpret the movement of the series even after adjustment for seasonal variation. This means that quarter-to-quarter movements of seasonally adjusted estimates may not be reliable indicators of trend behaviour.

16. The series have been seasonally adjusted from September 1983 and the historical series can be made available on request. The seasonal factors are reviewed annually to take account of each additional year's original data. The most recent review took place in the March quarter 1994.

17. Details about the method of seasonal adjustment of these series are available on request.

Trend Estimates

18. The ABS considers that trend estimates provide a more reliable guide to the underlying direction of the data, and are more suitable than either the seasonally adjusted or original data for most business decisions and policy advice.

19. The trend estimates in this publication, obtained by dampening out the irregular component from the seasonally adjusted series, are calculated using the centred 13-term Henderson moving average. Estimates for the six

most recent months cannot be calculated using this centred average method; instead an asymmetric average is used. This can lead to revisions in the trend estimates for the last six months when data become available for later months. Revisions of trend estimates will also occur with revisions to the original data and re-estimation of seasonal adjustment factors. Prior to the March quarter 1994 issue, trend estimates were calculated using a centred 23-term Henderson moving average of the seasonally adjusted series.

20. If a series is highly volatile then the trend estimates will be subject to greater revision for the latest few months as data become available. However, it is important to note that this does not make the trend series inferior to the seasonally adjusted or original series. In such cases the effect of the irregular component on overall movements will remain in the seasonally adjusted and the original estimates but not in the trend series.

21. For information about ABS procedures for deriving trend estimates and analysis of advantages of using them over alternative techniques for monitoring trends, refer to the ABS Information Paper:

- *A Guide to Interpreting Time Series - Monitoring 'Trends': an Overview* (1348.0); or contact the Assistant Director, Time Series Analysis on (06) 252 6345.

Two feature articles which have appeared in the ABS monthly publication *Australian Economic Indicators* (1350.0) may also be of interest:

- *Picking Turning Points in the Economy* (April 1991); and
- *Smarter Data Use* (March 1992).

Comparability of results with the Labour Force Survey

22. The ABS publishes a number of independently obtained series of employment estimates.

23. The monthly Labour Force Survey (LFS) collects data by interview from a sample of about 29,000 private and non-private dwellings, using trained interviewers. Self-employed persons are included in the Labour Force Survey. The estimates are published in *The Labour Force, Australia, Preliminary* (6202.0) and *The Labour Force, Australia* (6203.0). There are conceptual and methodological reasons for differences in the estimates produced by the two surveys. These are discussed in an *Information Paper: Comparison of Employment Estimates from the Labour Force Survey and the Survey of Employment and Earnings* (6263.0).

24. Since the introduction of the SEE series in the September quarter 1983, the estimates of the number of wage and salary earners have been lower than those from the LFS. The difference between the two series started to

widen during 1989 and has grown to its present level of approximately 610,000.

25. When making comparisons of the wage and salary earners components of the two surveys it must be borne in mind that SEE draws its sample from the ABS register of businesses while LFS is a household survey. Because of this it is important to note that, on occasions, the register can be subject to undercoverage of business units and that it can be affected by delays in the birth of new businesses to it. This can lead to undercoverage of samples selected from the register, such as SEE, but cannot for a household based collection, such as LFS. A study is being undertaken in order to identify the extent of undercoverage on the register.

26. Separate estimates of full-time and part-time employees are included in Table 11. For definitions of these terms, see Appendix 2 - Glossary. This table was first published in the June quarter 1987 issue of this publication. Information for previous quarters back to September 1983 is available on request. For the reasons outlined above in paragraph 25, it is difficult to compare estimates of full-time and part-time employees derived from the SEE with those produced from the LFS. Generally, the number of full-time employees is higher in the LFS series, and the number of part-time employees is higher in the SEE series. In the LFS, a person who works more than 35 hours a week in total in two (or more) part-time jobs is classified as working full-time. However, in this situation, the SEE would show two part-time jobs as having been filled.

27. The ABS considers that the Labour Force series provides the better indicator of overall employment movements at the Australian and State level. The aggregate employment estimates in the quarterly National Accounts are based on that source.

Comparability of results with the Average Weekly Earnings survey

28. The SEE collects total quarterly employee earnings primarily for use in estimating the gross domestic product component of the Australian National Accounts. Whilst average employee earnings can be derived from these data, the results will not be comparable with those from the Survey of Average Weekly Earnings (AWE) published in *Average Weekly Earnings, States and Australia* (6302.0). The SEE collects the sum of employee earnings paid in all pay periods ending in a quarter and the results will be affected by the varying number of pay periods from quarter to quarter, whereas the AWE relates to a specified pay period within a quarter and is not subject to such influences. In addition, certain types of payments within the scope of the SEE, such as retrospective pay, pay in advance, leave loadings and severance, termination and redundancy payments are specifically excluded from the AWE. The SEE earnings data are also subject to seasonal variations particularly in December and March quarters due to the incidence of holidays taken in January

being paid in advance and the earnings being reported in December quarter figures.

Related publications

29. Users may also wish to refer to the following publications which are available on request:

- *The Labour Force, Australia* (6203.0) — issued monthly
- *Average Weekly Earnings, Australia (Preliminary)* (6301.0) and *Average Weekly Earnings, States and Australia* (6302.0) — issued quarterly
- *Labour Statistics, Australia* (6101.0) — issued annually
- *A Guide to Labour Statistics* (6102.0) — issued 10 February 1986
- *Small Business in Australia 1993* (1321.0) — issued November 1993
- *Labour Force Projections, Australia, 1995-2011* (6260.0) — issued 27 July 1994.

30. Current publications produced by the ABS are listed in the *Catalogue of Publications and Products, Australia* (1101.0). The ABS also issues, on Tuesdays and Fridays, a *Publications Advice* (1105.0) which lists publications to be released within the next few days. The Catalogue and Publications Advice are available from any ABS office.

Unpublished statistics

31. In some cases, the ABS can also make available other information which is not published. This information may be made available on a number of media such as microfiche, photocopy, data tape, computer printout, floppy disk and customised reports. Generally, a charge is made for providing unpublished information. Inquiries should be made to the contact officer whose name appears in the Inquiries box at the front of this publication.

Revision of data

32. Due to a recently detected error within the data processing system for the March and June quarters 1994, some of the data for these quarters were incorrect and have been recalculated. Columns or rows within this publication relating to these quarters have been annotated with an (r) to signify that the data in the column or row may have been revised.

Symbols and other usages

- nil or rounded to zero
- r revised
- * subject to sampling variability too high for most practical purposes. See paragraph 3 of Appendix 1 - Technical Note

Where figures have been rounded, discrepancies may occur between sums of the component items and totals.

APPENDIX 1 - TECHNICAL NOTE

Reliability of estimates

1. Estimates for both the private and public sectors in this publication are subject to sampling variability because they are based on information relating to a sample of employer units rather than a full enumeration, (i.e. they may differ from the figures that would have been produced if the information had been obtained from all employer units). This difference, called sampling error, should not be confused with inaccuracy that may occur because of imperfections in reporting by respondents or in processing by the ABS; such inaccuracy is referred to as non-sampling error and may occur in any enumeration, whether it be a full count or sample. Efforts have been made to reduce the non-sampling error by careful design of questionnaires, detailed checking of returns and quality control of processing.

2. The sampling error associated with any estimate can be estimated from the sample results. One measure of sampling error is given by the *standard error* which indicates the degree to which an estimate may vary from the value that would have been obtained from a full enumeration (the 'true' figure). There are about two chances in three that a sample estimate differs from the true value by less than one standard error, and about nineteen chances in twenty that the difference will be less than two standard errors.

3. If the standard error of an estimate is large relative to the size of the estimate, the usefulness of that estimate is seriously impaired. For the tables in this publication, estimates with standard errors greater than 25 per cent of the estimate have been labelled with an asterisk.

4. Standard errors of estimates of *level*, by industry, are shown in Table A for the private sector and Table B for the public sector and relate only to the third month of the quarter. As the survey is conducted quarterly from a common sample of employer units, who report details of employees for each month of the quarter, standard errors

on all estimates for total persons employed in each month are of a similar magnitude.

5. Standard errors of estimates of *movements*, provide a measure of the reliability of changes in the level of an estimate. Tables A and B show standard errors for movements in the level of estimates for the private and public sectors respectively for persons between the third month of successive quarters. Annual movement standard errors are also shown and relate to March 1992 - March 1993 movements.

6. An example of the use of standard error on *levels* is as follows. If the estimated number of wage and salary earners was 5,800,000 with a standard error of 34,000, then there would be about two chances in three that a full enumeration would have given a figure in the range 5,766,000 to 5,834,000 and about nineteen chances in twenty that it would be in the range 5,732,000 to 5,868,000.

7. An example of the use of standard error on *movements* is as follows. If the estimated standard error for a quarterly change estimate of wage and salary earners was 15,000 and the quarterly change estimate between two quarters was 40,000 persons, then there would be about two chances in three that a full enumeration would have given a quarterly change estimate in the range 25,000 to 55,000 persons and about nineteen chances in twenty that it would be in the range 10,000 to 70,000 persons.

8. Quarterly movements in estimates of employed wage and salary earners are considered to be statistically significant where they exceed two standard errors.

9. Standard errors for earnings are approximately the same relative size as standard errors for number of employees. Detailed standard errors for both employment and earnings are available on request.

TABLE A. EMPLOYED WAGE AND SALARY EARNERS, STATES AND TERRITORIES — PRIVATE SECTOR :
STANDARD ERRORS, SEPTEMBER 1994, PERSONS
(*000)

Industry	NSW	Vic.	Qld	SA	WA	Tas.	NT	ACT	Aust.
LEVEL									
Mining	1.0	0.6	1.7	0.4	0.7	0.1	0.1	—	2.2
Manufacturing	11.7	13.0	8.4	4.5	4.6	1.1	0.1	0.3	20.5
Construction	10.9	9.4	6.6	1.3	3.2	1.3	0.3	0.7	16.2
Wholesale trade	8.9	8.7	5.4	2.3	3.5	0.8	0.3	0.3	14.2
Retail trade	13.8	13.2	10.5	4.9	6.8	1.7	0.7	1.1	23.5
Transport and storage	6.9	9.7	4.7	2.1	3.6	0.5	0.4	0.6	13.6
Finance, property and business services	17.0	15.9	5.9	6.3	5.3	0.8	0.5	1.1	25.4
Community services	18.9	15.7	7.6	6.8	10.8	2.2	1.8	2.2	28.9
Recreation, personal and other services(a)	10.3	11.5	8.5	4.6	3.9	0.8	1.0	0.9	18.7
Total all industries	36.4	35.1	21.0	12.8	16.2	3.5	2.3	3.1	58.8
QUARTERLY MOVEMENT									
Mining	0.8	0.7	1.6	0.3	0.8	0.3	0.2	—	2.1
Manufacturing	7.2	10.0	5.3	3.0	3.8	1.4	0.2	0.4	14.3
Construction	4.9	5.3	3.5	0.9	3.7	0.6	0.2	0.9	9.0
Wholesale trade	11.2	6.9	6.0	3.3	2.7	0.7	0.4	0.4	15.1
Retail trade	6.1	9.0	18.4	2.4	4.9	1.1	1.2	0.9	22.1
Transport and storage	3.6	4.7	2.8	1.2	2.8	0.2	0.2	—	7.3
Finance, property and business services	9.8	11.2	7.5	4.9	3.7	1.2	1.5	0.7	17.8
Community services	12.0	9.8	4.9	3.1	4.9	0.6	1.6	0.8	17.3
Recreation, personal and other services(a)	5.0	9.3	5.6	2.7	2.2	0.6	0.7	0.8	12.4
Total all industries	22.7	24.2	23.2	8.3	10.5	2.5	2.7	1.9	42.8
ANNUAL MOVEMENT(b)									
Mining	0.9	0.9	2.1	0.2	1.3	0.1	0.4	—	2.8
Manufacturing	6.4	9.1	4.2	2.3	3.5	0.6	0.2	0.6	12.6
Construction	5.1	7.5	4.1	1.3	4.8	0.6	2.1	1.2	11.4
Wholesale and Retail trade	16.2	10.6	8.9	6.3	4.0	2.1	1.1	1.7	23.0
Transport and storage	5.0	4.8	2.1	4.7	2.4	0.3	1.4	0.3	9.1
Finance, property and business services	12.3	6.5	6.5	3.2	5.8	0.8	2.2	1.2	16.9
Community services	7.3	10.5	7.1	4.5	3.4	1.0	1.5	1.0	15.9
Recreation, personal and other services(a)	12.0	6.8	5.5	3.2	3.8	0.9	1.1	1.6	15.8
Total all industries	26.5	21.8	15.9	10.5	10.9	2.8	4.0	3.1	41.2

(a) Excludes private households employing staff. (b) See paragraph 5 in Appendix 1.

TABLE B. EMPLOYED WAGE AND SALARY EARNERS, STATES AND TERRITORIES — PUBLIC SECTOR :
STANDARD ERRORS, SEPTEMBER 1994, PERSONS
(^{'000})

Industry	NSW	Vic.	Qld	SA	WA	Tas.	NT	ACT	Aust.
LEVEL									
Agriculture, forestry, fishing and hunting	—	—	—	—	—	—	—	—	—
Mining	—	—	—	—	—	—	—	—	—
Manufacturing	0.1	0.3	—	—	—	—	—	—	0.3
Electricity, gas and water	0.1	0.2	0.2	—	—	—	—	—	0.2
Construction	1.6	0.7	—	—	—	—	—	—	1.7
Wholesale trade	—	—	—	—	—	—	—	—	—
Retail trade	—	—	—	—	—	—	—	—	—
Transport and storage	0.8	0.6	—	—	0.3	—	—	—	1.1
Communication	—	—	—	—	—	—	—	—	—
Finance, property and business services	0.2	0.3	0.1	0.1	—	—	—	—	0.4
Public administration and defence(a)	3.9	5.9	0.9	1.6	1.0	0.2	—	—	7.4
Community services	1.5	5.0	3.2	0.6	0.7	—	—	0.1	6.2
Recreation, personal and other services	—	—	—	0.2	—	—	—	—	0.2
Total all industries	3.7	7.7	3.3	1.6	0.7	0.2	—	0.1	9.3
QUARTERLY MOVEMENT									
Agriculture, forestry, fishing and hunting	—	—	—	—	—	—	—	—	—
Mining	—	—	—	—	—	—	—	—	—
Manufacturing	0.8	1.3	—	—	—	—	—	—	1.5
Electricity, gas and water	0.1	0.2	0.2	—	—	—	—	—	0.2
Construction	1.6	0.4	—	—	1.5	—	—	—	2.2
Wholesale trade	—	—	—	—	—	—	—	—	—
Retail trade	—	—	—	—	—	—	—	—	—
Transport and storage	0.9	0.4	—	—	0.3	—	—	—	1.0
Communication	—	—	—	—	—	—	—	—	—
Finance, property and business services	1.2	0.2	—	—	—	—	—	—	1.2
Public administration and defence(a)	4.8	6.0	0.2	—	1.1	0.1	—	—	7.8
Community services	2.7	0.6	3.3	0.1	1.4	—	—	0.1	4.5
Recreation, personal and other services	1.5	0.1	—	0.2	—	—	—	—	1.5
Total all industries	4.2	6.0	3.3	0.2	1.0	0.1	—	0.1	8.1
ANNUAL MOVEMENT(b)									
Agriculture, forestry, fishing and hunting	—	—	—	—	—	—	—	—	—
Mining	—	—	—	—	—	—	—	—	—
Manufacturing	0.5	0.8	—	—	—	—	—	—	1.0
Electricity, gas and water	0.1	0.1	0.1	—	—	—	—	—	0.2
Construction	—	0.6	—	—	—	—	—	—	0.6
Wholesale and Retail trade	—	—	—	0.2	—	—	—	—	0.2
Transport and storage	0.1	0.6	0.1	—	—	—	—	—	0.7
Communication	—	—	—	5.5	0.1	—	—	—	5.5
Finance, property and business services	0.6	0.3	—	—	—	0.1	—	—	0.6
Public administration and defence(a)	0.5	1.1	2.1	0.7	0.2	0.2	—	—	2.5
Community services	2.4	0.9	0.9	0.7	0.3	—	0.2	—	2.9
Recreation, personal and other services	0.5	—	—	0.2	—	—	—	—	0.6
Total all industries	2.8	1.9	2.3	5.5	0.3	0.2	0.2	0.1	6.9

(a) Excludes members of permanent defence forces and employees of overseas embassies, consulates etc. (b) See paragraph 5 in Appendix 1.

APPENDIX 2 - GLOSSARY

Commonwealth government employees. Persons employed by all departments, agencies and authorities created by or reporting to the Commonwealth Parliament, including trading bodies such as banks, airlines and communications bodies. Those bodies run jointly by Commonwealth and State governments are classified to Commonwealth.

Employer units are the statistical units which make up the population from which the sample was drawn (see paragraph 4 of the Explanatory Notes).

Employer unit size. To derive estimates of employer unit size, each of the approximately 7,500 private sector employer units is allocated a size classification based on the number of employees actually reported for the middle month of the quarter. The size classification reflects the size of a business in a particular State/Territory and not necessarily the size of a business Australia wide.

Full-time employees. Permanent, temporary and casual employees who normally work the agreed or award hours for a full-time employee in their occupation and who received pay for any part of the reference period. If agreed or award hours do not apply, employees are regarded as full-time if they ordinarily work 35 hours or more per week.

General government enterprises. Public sector enterprises mainly engaged in the production of goods and services, outside the normal market mechanisms, providing these goods and services to the general public. The costs of operations are often financed from public revenues. e.g. Government Departments.

Gross earnings. Payments to employees before tax and other items (such as superannuation) are deducted. They comprise amounts paid from interstate or overseas; ordinary time and overtime earnings; overaward payments; penalty payments, shift and other remunerative allowances; commissions and retainers; bonuses and similar payments; payments under incentive or piecework; payments under profit-sharing schemes; leave loadings; annual and long service leave payments; sick leave payments; advance and retrospective payments; salaries and fees paid to company directors, members of boards, committees, commissions, councils, etc.; amounts paid to employees on workers' compensation who continue to be paid through the payroll; and severance, termination and redundancy payments.

Industry. Industry is classified according to the *Australian Standard Industrial Classification (ASIC) 1983 Edition* (1201.0).

Institutional sector. Institutional sector is classified according to the *Standard Institutional Sector Classification of Australia (SISCA) 1987 Edition* (1218.0).

Local government employees. Persons employed by municipalities and shires and other local authorities created by or subject to the provisions of local government legislation, such as county councils in New South Wales.

Number of employees. All wage and salary earners who received pay for any part of the relevant pay period. All permanent, temporary, casual, managerial and executive employees are included. Part-time and casual employees who may have worked only a few hours during the reference period are included. Employees on *paid* leave and those employees on workers' compensation who continue to be paid through the employer's payroll are also included. Casual employees who work on an irregular basis and who were not paid during the relevant pay period, employees on leave without pay, on strike or stood down without pay for the whole of the pay period are excluded.

Part-time employees. Permanent, temporary and casual employees who are not classified as full-time employees as defined.

Public employees. Administrative employees and all other employees of Commonwealth, State and Local government businesses and financial undertakings engaged in services such as railways, road transport, banks, postal and telecommunications, air transport, education, radio, television, police, public works, factories, marketing authorities, hospitals and welfare institutions.

Public financial enterprises. Public sector enterprises actively involved in financial market transactions such as borrowing and lending. Excluded are those public bodies whose funds flow directly to or from general government revenue.

Public trading enterprises. Public sector enterprises predominantly engaged in the production of goods and services with an intention of maximising profits and financial returns with most operating costs being derived from trading activities.

Reference period for the number of employees. The last pay period ending on or before the third Friday in each month.

Reference period for earnings. All pay periods for which the end of the pay period falls within the quarter.

Sector. Public sector includes local government authorities and all government departments, agencies and authorities created by, or reporting to the Commonwealth and State Parliaments. All remaining employees are classified as private sector.

State government employees. Persons employed by all State government departments and authorities created by, or reporting to, State Parliaments, including organisations for which the Commonwealth has assumed financial responsibility, e.g. universities. Following self-government, the Northern Territory and the Australian Capital Territory administrations have been classified to 'State' governments. Employees of State governments employed interstate are included in the estimates of the State in which they are based.





For more information ...

The ABS publishes a wide range of statistics and other information on Australia's economic and social conditions. Details of what is available in various publications and other products can be found in the *ABS Catalogue of Publications and Products* available at all ABS Offices (see below for contact details).

Information Consultancy Service

Information tailored to special needs of clients can be obtained from the Information Consultancy Service available at ABS Offices (see Information Inquiries below for contact details).

National Dial-a-Statistic Line

0055 86 400

(Steadycom P/L: premium rate 25c/21.4 secs.)

This number gives 24-hour access, 365 days a year, for a range of statistics.

Electronic Data Services

A large range of data is available via on-line services, diskette, magnetic tape, tape cartridge and CD ROM. For more details about these electronic data services, contact any ABS Office (see below).

Bookshops and Subscriptions

There is a large number of ABS publications available from ABS bookshops (see below Bookshop Sales for contact details). The ABS also provides a subscription service through which nominated publications are supplied by mail on a regular basis (telephone Subscription Service toll free on 008 02 0608 Australia wide).

Sales and Inquiries

Regional Offices	Information Inquiries	Bookshop Sales
SYDNEY (02)	268 4611	268 4620
MELBOURNE (03)	615 7000	615 7829
BRISBANE (07)	222 6351	222 6350
PERTH (09)	360 5140	360 5307
ADELAIDE (08)	237 7100	237 7582
HOBART (002)	20 5800	20 5800
CANBERRA (06)	252 6627	207 0326
DARWIN (089)	43 2111	43 2111
National Office		
ACT (06)	252 6007	008 020 608

ABS E-mail Addresses

Keylink	STAT.INFO/ABS
X.400	(C:AU,A:TELMEMO,O:ABS,SN:INFO,FN:STAT)
Internet	STAT.INFO@ABS. TELEMEMO.AU



Information Services, ABS, PO Box 10, Belconnen ACT 2616

